



GCE A LEVEL

A480U30-1A

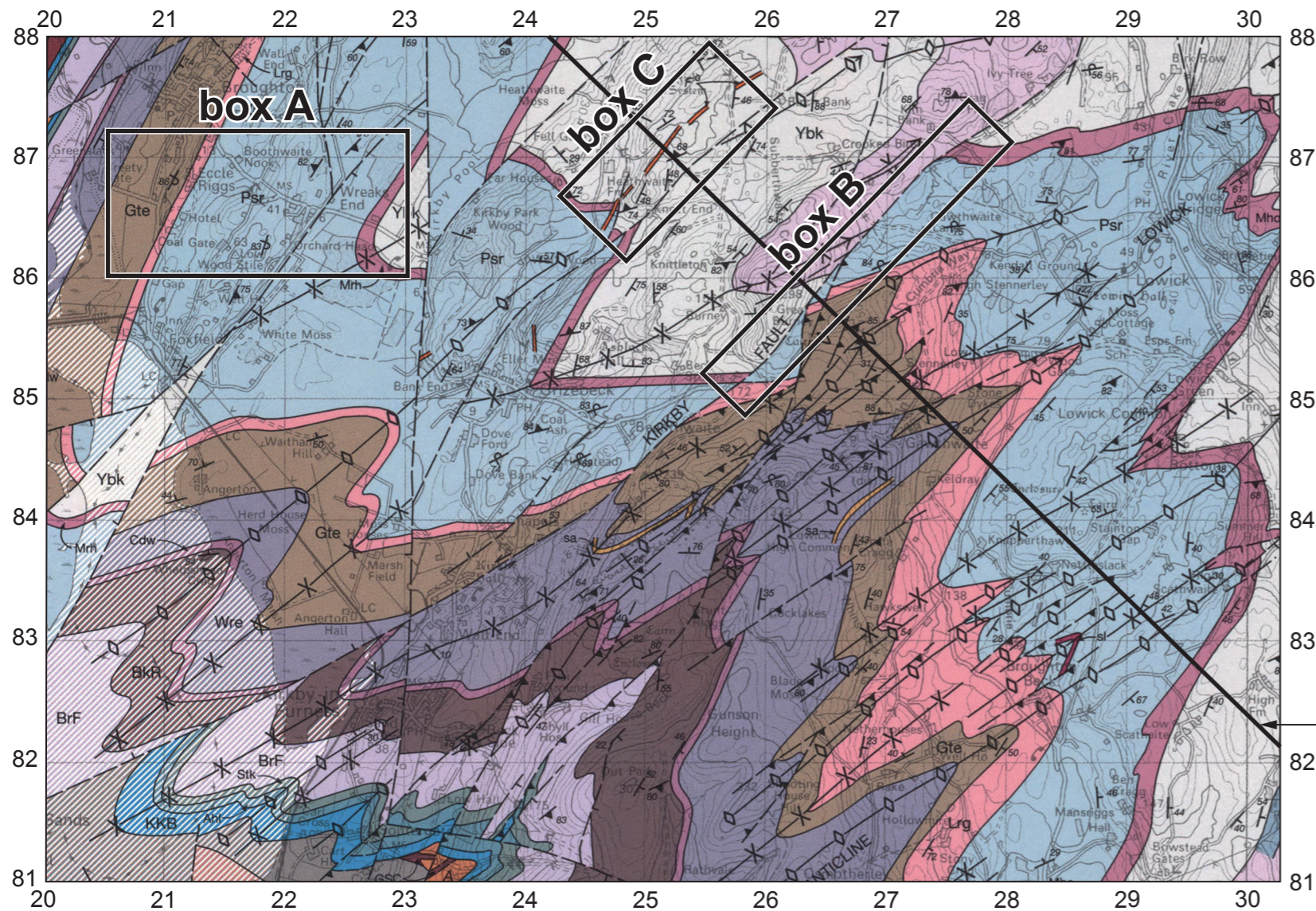


MONDAY, 17 JUNE 2024 – AFTERNOON

GEOLOGY – A level component 3
Geological Applications

GEOLOGICAL MAP EXTRACT

WJEC - EDUQAS A480U30-1A
ADVANCED GEOLOGY COMPONENT 3 JUNE 2024
 Extract from Ulverston Sheet 48 (Solid edition) 1:50 000 (1 cm to 500 m)



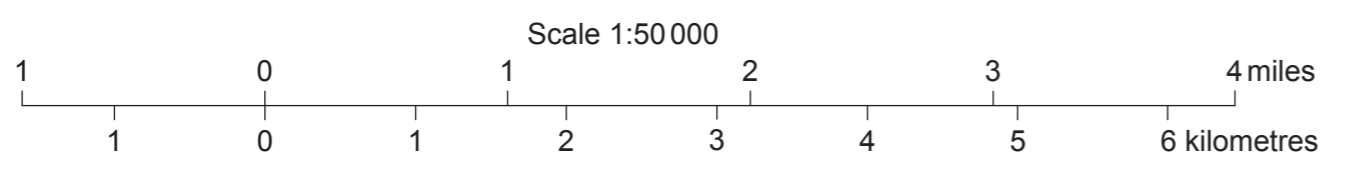
Key:

- Geological boundary, Solid
- $\swarrow 45$ Inclined strata, dip in degrees
- $\searrow 80$ Overturned strata, dip in degrees
- $\swarrow 82$ Inclined, slaty cleavage, dip in degrees
- $\diamond \rightarrow$ Axial plane trace of anticline
- $\times \rightarrow$ Axial plane trace of syncline (arrows indicate plunge, in degrees, where known)
- |— Fault; crossmark on downthrow side
- \rightleftarrows Fault; arrows indicate relative strike slip movement

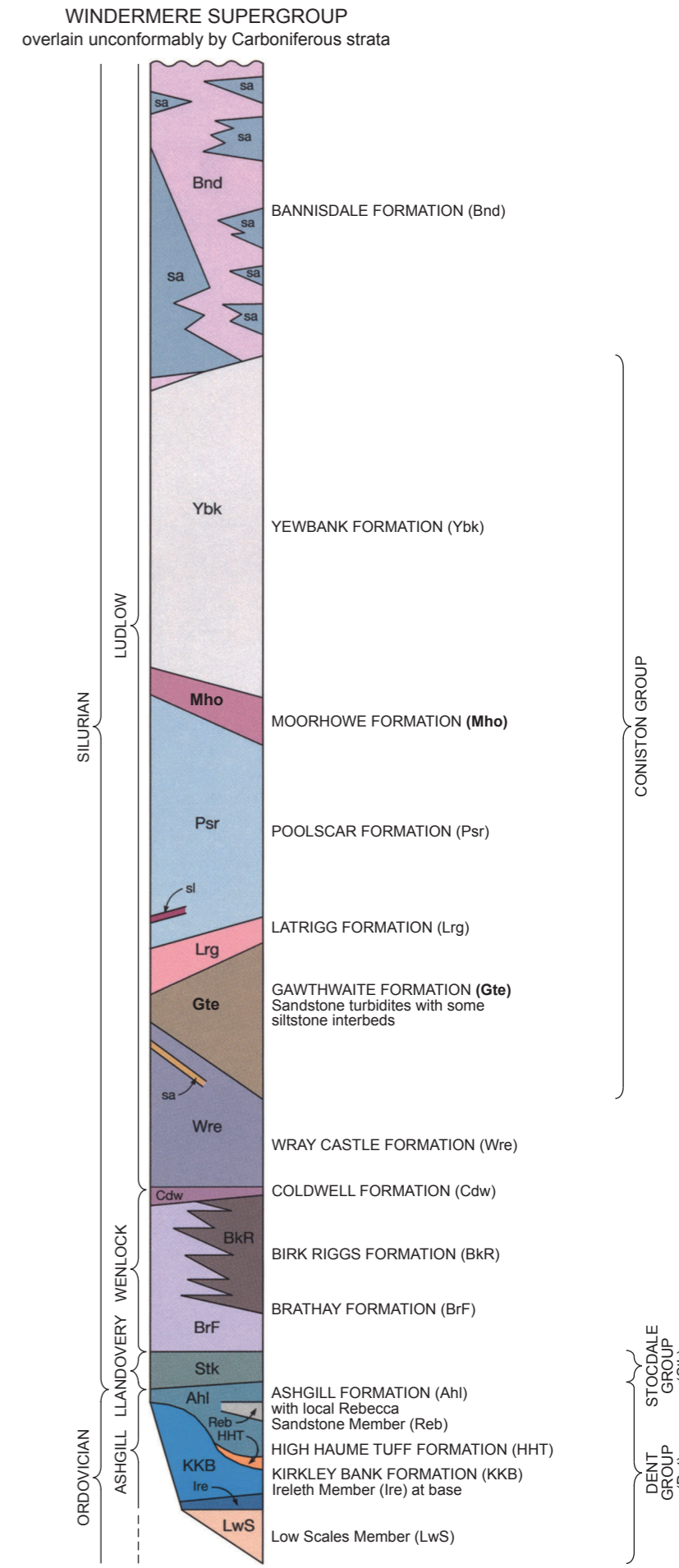
Line of cross-section

Intrusive Igneous Rocks

F^G Microgranite (Devonian)

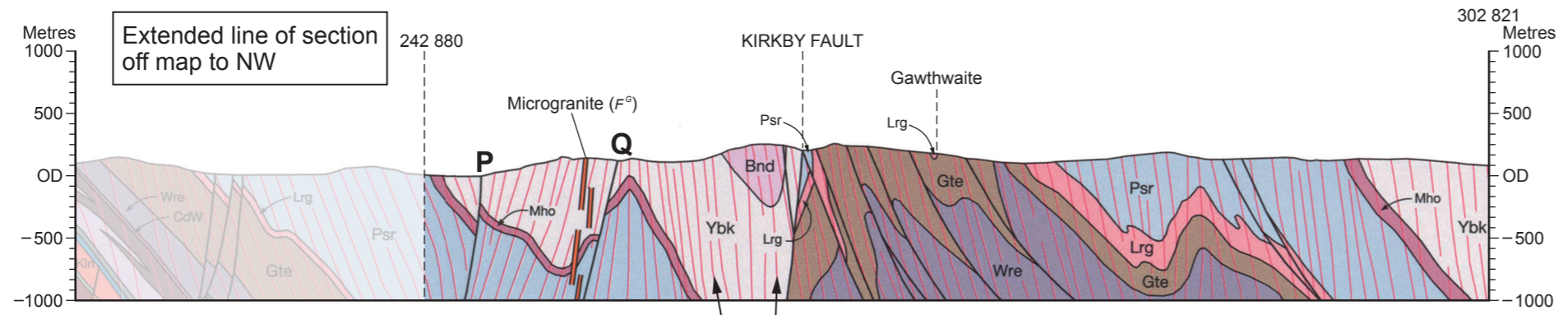


Generalised Geological Column
 Scale 1:20 000 (1 cm to 200 m)



CROSS-SECTION SHOWING THE GENERAL RELATIONS OF ROCKS ALONG THE LINE DRAWN ON THE MAP

Horizontal and vertical scale 1:50 000



Extended line of section off map to NW

red lines are a diagrammatic representation of cleavage planes

Reproduced by permission of the British Geological Survey
 © UKRI All rights reserved