



GCE A LEVEL

A480U30-1A



MONDAY, 17 JUNE 2024 – AFTERNOON

**GEOLOGY - A LEVEL COMPONENT 3
GEOLOGICAL APPLICATIONS**

GEOLOGICAL MAP EXTRACT

Generalised Geological Column
 Scale 1:20 000 (1 cm to 200 m)

WINDERMERE SUPERGROUP
 overlain unconformably by Carboniferous strata

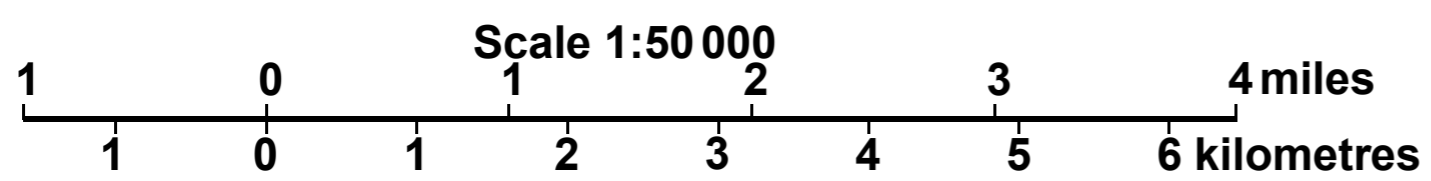
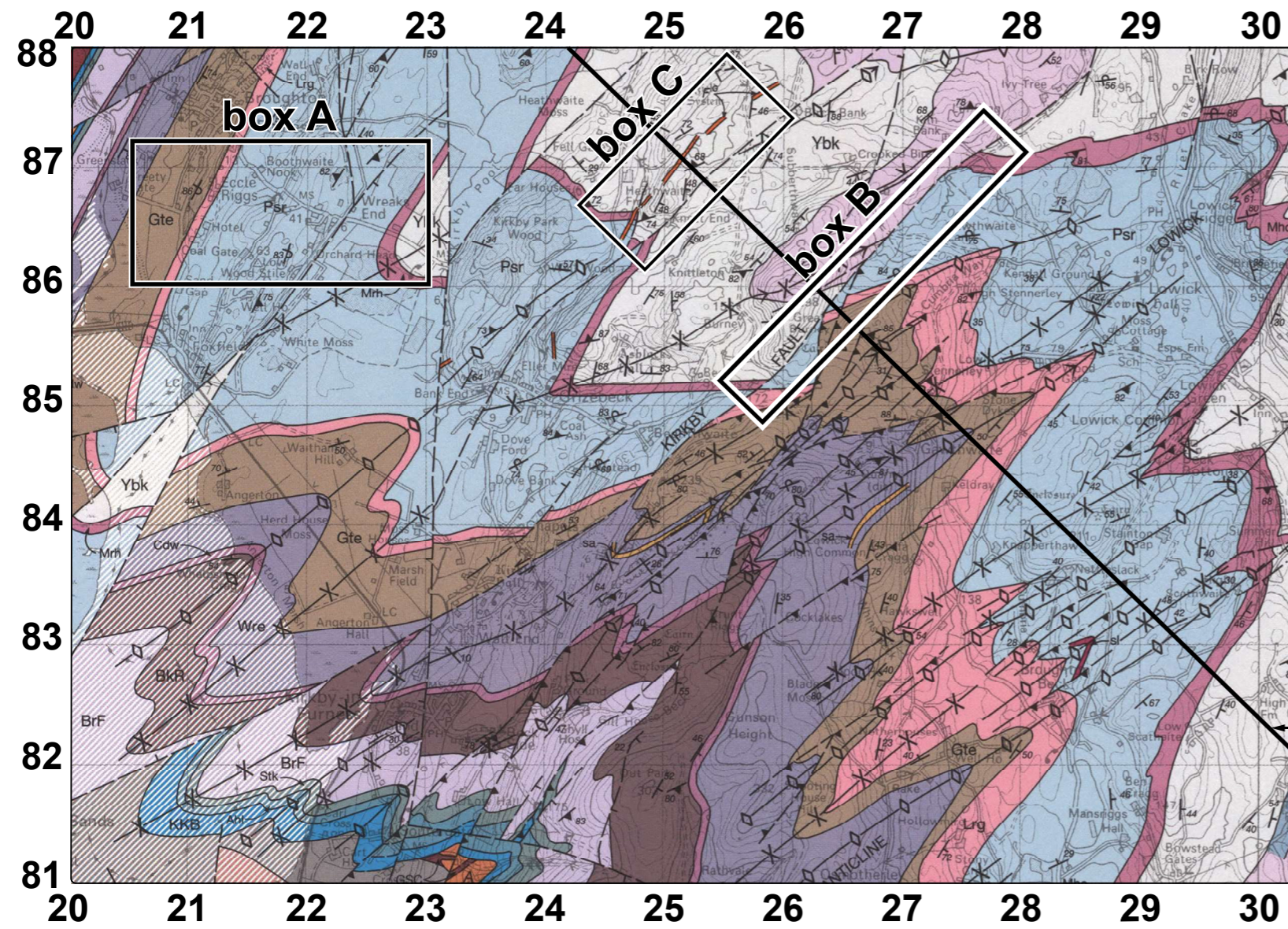
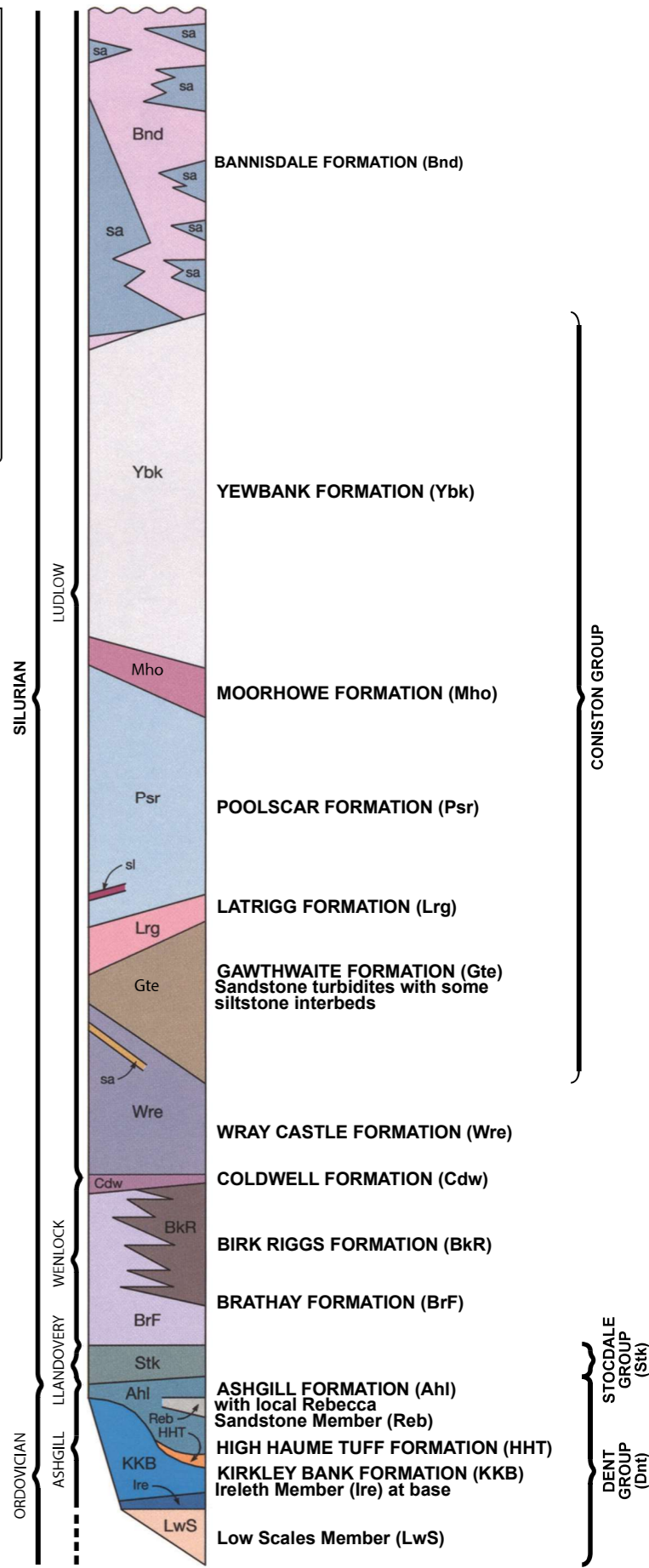
Key:

- Geological boundary, Solid
- ↘⁴⁵ Inclined strata, dip in degrees
- ↘⁸⁰ Overturned strata, dip in degrees
- ↘⁸² Inclined, slaty cleavage, dip in degrees
- ↔ Axial plane trace of anticline
- ↔ Axial plane trace of syncline (arrows indicate plunge, in degrees, where known)
- |— Fault; crossmark on downthrow side
- ↔↔ Fault; arrows indicate relative strike slip movement

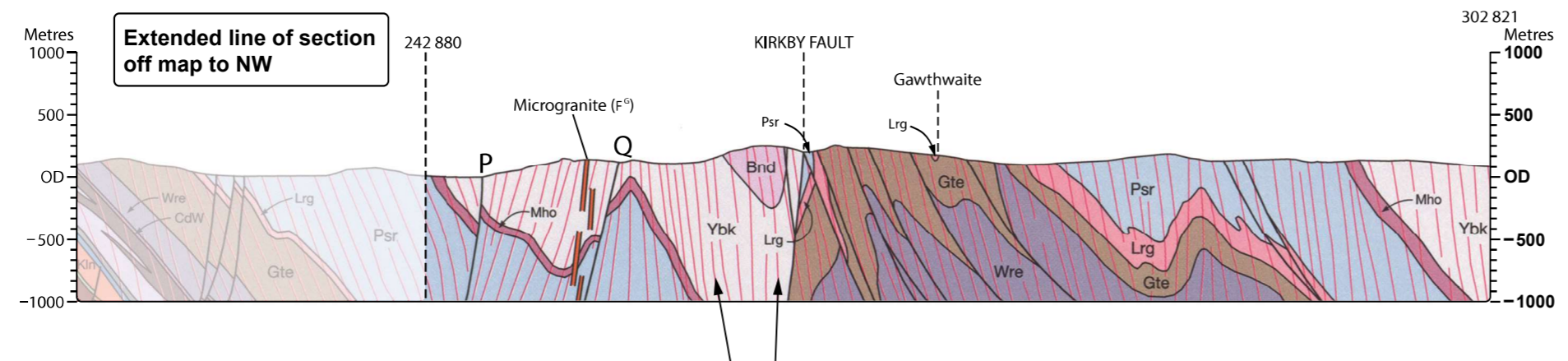
Line of cross-section

Intrusive Igneous Rocks

F^G Microgranite (Devonian)



CROSS-SECTION SHOWING THE GENERAL RELATIONS OF ROCKS ALONG THE LINE DRAWN ON THE MAP
 Horizontal and vertical scale 1:50 000



red lines are a diagrammatic representation of cleavage planes

Reproduced by permission of the British Geological Survey © UKRI All rights reserved