



Surname _____

Forename(s) _____

Centre Number _____

Candidate Number _____

Candidate Signature _____

I declare this is my own work.

AS

PSYCHOLOGY

Paper 2 Psychology in context

7181/2

Tuesday 21 May 2024

Afternoon

Time allowed: 1 hour 30 minutes

At the top of the page, write your surname and forename(s), your centre number, your candidate number and add your signature.

[Turn over]



JUN 24 7 1 8 1 2 0 1

BLANK PAGE



MATERIALS

For this paper you may use:

- a calculator.

INSTRUCTIONS

- Use black ink or black ball-point pen.
- Answer ALL questions.
- You must answer the questions in the spaces provided. Do NOT write on blank pages.
- If you need extra space for your answer(s), use the lined pages at the end of this book. Write the question number against your answer(s).
- Do all rough work in this book. Cross through any work you do not want to be marked.

INFORMATION

- The marks for questions are shown in brackets.
- The maximum mark for this paper is 72.
- You will be assessed on your ability to:
 - use good English
 - organise information clearly
 - use specialist vocabulary where appropriate.

DO NOT TURN OVER UNTIL TOLD TO DO SO



[Turn over]



[Turn over]



0	3
---	---

Briefly explain ONE limitation of the way Bandura investigated social learning. [2 marks]



0	4
---	---

Outline ONE role of schema according to the cognitive approach. [2 marks]

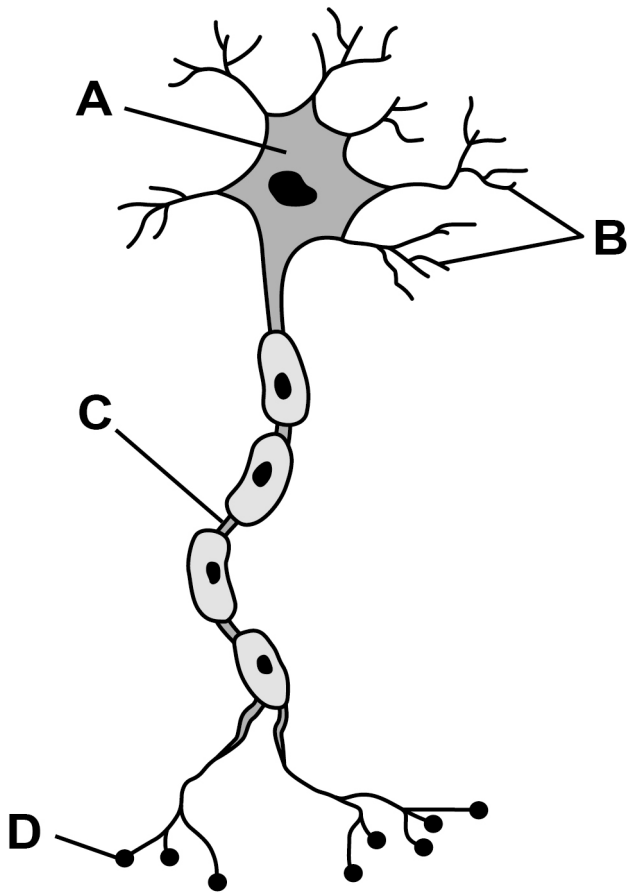
[Turn over]



05

FIGURE 1 shows a typical motor neuron.
Four components of the motor neuron are labelled
A, B, C and D.

FIGURE 1 Typical motor neuron



Using the letters given in **FIGURE 1**, correctly identify the components of the motor neuron in the table below.
[4 marks]

COMPONENT	
A	
B	
C	
D	

[Turn over]



06

Describe and evaluate the biological approach in psychology. [8 marks]

You may use this space to plan your answer.



[Turn over]

24



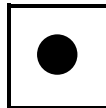
SECTION B**PSYCHOPATHOLOGY**

Answer ALL questions in this section.

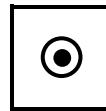
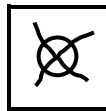
Only TWO answers per question are allowed.

For each question completely fill in the circle alongside the appropriate answer.

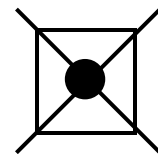
CORRECT METHOD



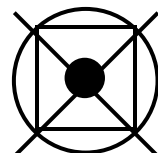
WRONG METHODS



If you want to change your answer you must cross out your original answer as shown.



If you wish to return to an answer previously crossed out, ring the answer you now wish to select as shown.



0	7
---	---

People with obsessive-compulsive disorder (OCD) show certain behavioural characteristics.

Which TWO of the following behaviours are characteristically shown by people with OCD?

Shade TWO boxes only. [2 marks]

A Constantly checking the oven is switched off.

B Constantly experiencing high anxiety.

C Constantly thinking bad things will happen.

D Constantly washing their hands.

E Constantly worrying about germs.

[Turn over]



0	8
---	---

A psychologist conducted a study into the effectiveness of two types of therapy used to treat depression. Cognitive behaviour therapy (CBT) and counselling were compared. People with depression were assigned to either Group 1 (CBT) or Group 2 (counselling).

People rated their depression before and after therapy. The psychologist then calculated an improvement score for each person.

TABLE 1, on the opposite page, shows the findings for Group 1 (CBT).

0	8	.	1
---	---	---	---

Calculate the mean improvement score for Group 1 (CBT). Give your answer to TWO significant figures. [2 marks]



TABLE 1
Improvement score for participants in Group 1 (CBT)

PARTICIPANT NUMBER	IMPROVEMENT SCORE
1	0
2	4
3	3
4	6
5	0
6	6
7	6
8	8
9	7

[Turn over]



REPEAT OF TABLE 1**Improvement score for participants in Group 1 (CBT)**

PARTICIPANT NUMBER	IMPROVEMENT SCORE
1	0
2	4
3	3
4	6
5	0
6	6
7	6
8	8
9	7



08.2

The psychologist found a mean improvement score of 1.5 for Group 2 (counselling).

Give ONE conclusion about the effectiveness of the therapies using the mean scores for BOTH groups. Explain your answer. [2 marks]

[Turn over]



10

Describe and evaluate the behavioural approach to the treatment of phobias. [12 marks]

You may use this space to plan your answer.



SECTION C**RESEARCH METHODS**

Answer ALL questions in this section.

A psychologist wanted to investigate teachers' opinions on differences in the way younger children and older children responded to instructions in class. Previous research showed inconsistent findings. The psychologist randomly selected five schools from all the primary schools in their city. Four of the five schools agreed to take part. The psychologist wrote six questions and interviewed the teachers of Year 2 and Year 5 in the four schools, asking each teacher the same six questions in the same order.



1	1
---	---

**Identify the type of interview used in this study.
Explain your answer. [2 marks]**

[Turn over]



1 3

Write ONE suitable open question the psychologist could use in their interview. [1 mark]

1 4

Identify the population the psychologist was interested in studying. [2 marks]

[Turn over]



1	5
---	---

Identify the sample used by the psychologist in the study. [1 mark]

1	6
---	---

Explain how the psychologist might have selected the five schools using random sampling. [2 marks]



1	8
---	---

One of the psychologist's questions asked the teachers to rate the general level of obedience for their class as a whole on a scale of 1–10. A rating of 1 meant the general level of obedience was low and a rating of 10 meant the general level of obedience was high. The results can be seen in TABLE 2.

TABLE 2 Teachers' Obedience Ratings

YEAR 2	YEAR 5
10	7
6	5
8	9
9	5
3	5
4	6
8	7
7	5
3	3



18.1

Calculate the median and mode obedience ratings for the Year 2 teachers. [2 marks]

18.2

Explain why the median may be a more appropriate average to use with the data for the Year 2 teachers in Question 18.1 than the mode. [2 marks]

[Turn over]



1	9
---	---

Psychologists often observe the behaviour of children.

Suggest how you could carry out an observation of obedient behaviour in Year 5 primary school children.

In your answer, you will be awarded credit for providing appropriate details about the following:

- **the type of observation you would carry out**
- **AT LEAST TWO examples of appropriate operationalised behavioural categories you would observe**
- **the behavioural sampling method you would use for your observations.**

[6 marks]



BLANK PAGE

For Examiner's Use	
Section	Mark
A	
B	
C	
TOTAL	

Copyright information

For confidentiality purposes, all acknowledgements of third-party copyright material are published in a separate booklet. This booklet is published after each live examination series and is available for free download from www.aqa.org.uk

Permission to reproduce all copyright material has been applied for. In some cases, efforts to contact copyright-holders may have been unsuccessful and AQA will be happy to rectify any omissions of acknowledgements. If you have any queries please contact the Copyright Team.

Copyright © 2024 AQA and its licensors. All rights reserved.

WP/M/DL/Jun24/7181/2/G4002/V3