



GCSE

3100UJ0-1

FRIDAY, 16 JUNE 2023 – AFTERNOON

HISTORY

Unit 3: Thematic Study

**3A. Changes in Crime and Punishment,
c.1500 to the Present Day**

**1 hour 15 minutes plus your additional
time allowance**

Surname _____

First name(s) _____

Centre Number _____

Candidate Number 0 _____

For Examiner's use only

Question	Maximum Mark	Mark Awarded
1.	4	
2.	4	
3.	6	
4.	6	
5.	12	
6.	12	
7.	16	
SPaG	4	
Total	64	

INSTRUCTIONS TO CANDIDATES

Use black ink, black ball-point pen or your usual method.

Write your name, centre number and candidate number in the spaces provided on the front cover.

Answer ALL questions.

Write your answers in the spaces provided in this booklet. If you run out of space, use the additional page(s) at the back of this booklet, taking care to number the question(s) correctly.

(Turn over)

INFORMATION FOR CANDIDATES

The number of marks is given in brackets at the end of each question.

Question 7 will assess your ability to construct a balanced, reasoned and well-substantiated extended response.

In addition, your answer to question 7 will assess your ability to spell, punctuate and use grammar accurately and use a wide range of specialist language as appropriate.

(Turn over)

Answer ALL questions.

QUESTION 1

Complete the sentences below with an accurate term. [4 marks]

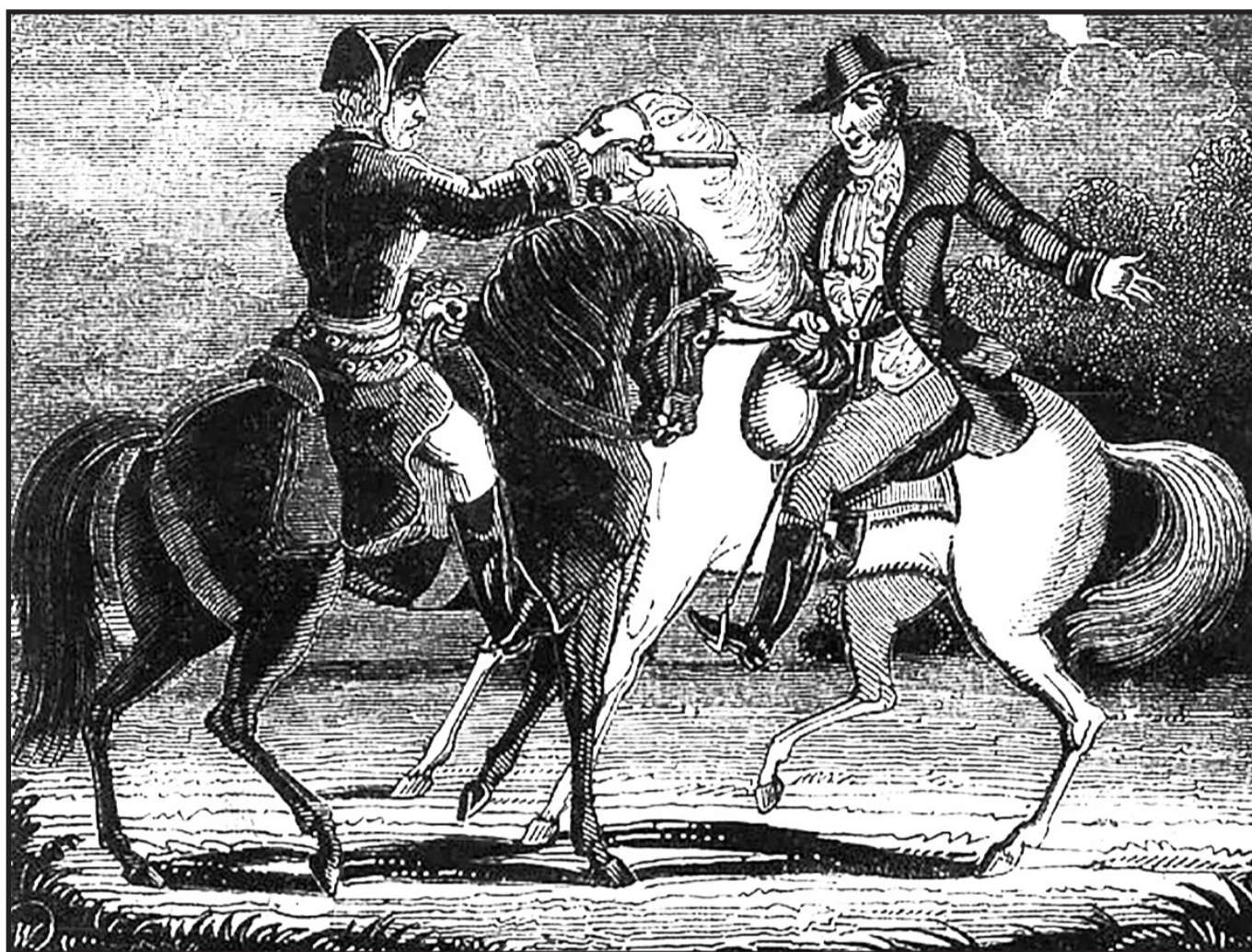
(a) During the Tudor period, the local magistrate appointed to keep the peace and hear minor legal cases was known as the

(b) In the eighteenth and nineteenth centuries, the punishment of sending criminals to Australia was known as

(Turn over)

(c) The Metropolitan Police was founded in 1829 in London by

(d) Since the twentieth century, the early release of a prisoner because of good behaviour is called

SOURCE A

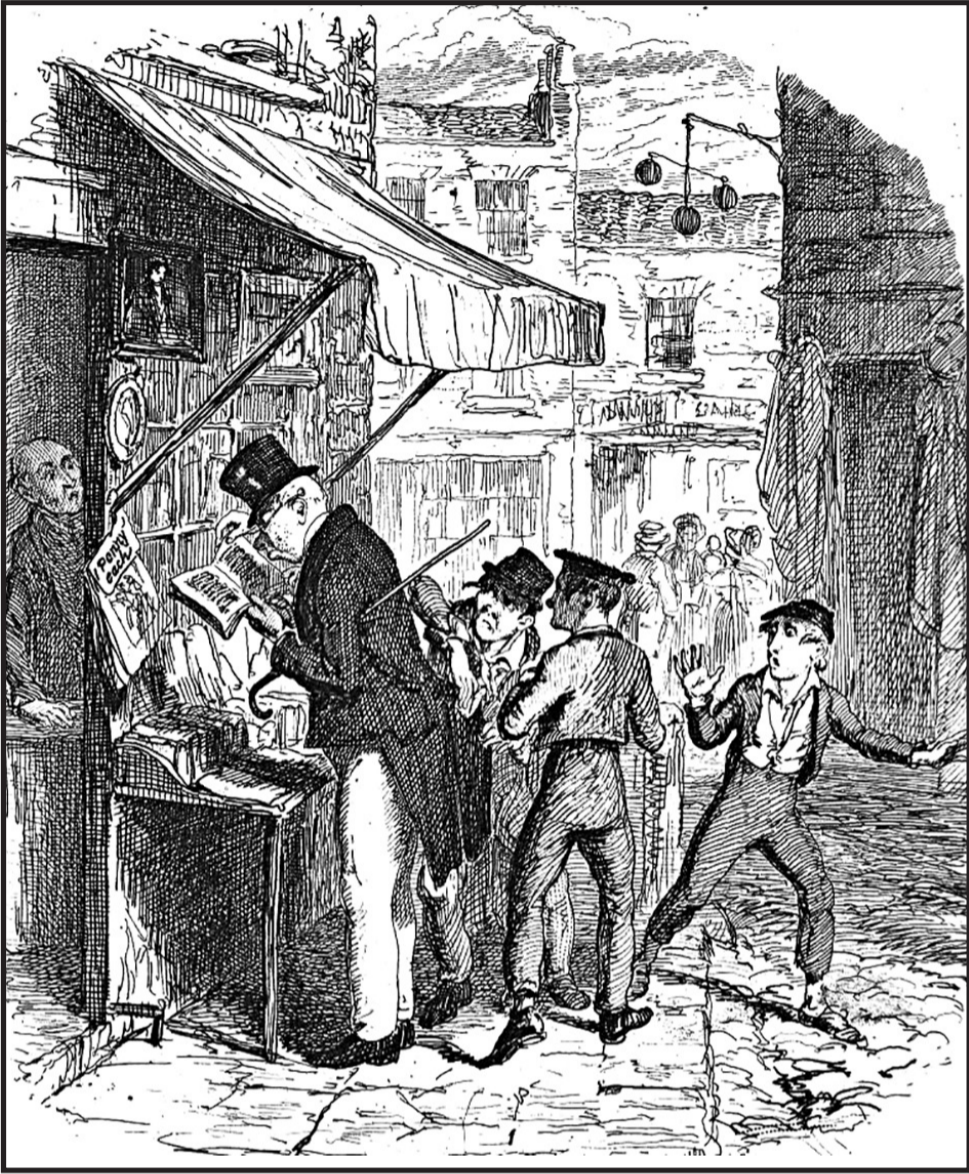
[An illustration showing a highway robbery in the early eighteenth century. It shows two men riding horses on a dark and lonely road. The man on the left has stopped the man on the right by pointing a pistol at him. The man on the right looks alarmed and has raised an open hand in a gesture of surrender.]

(Turn over)

SOURCE B

[A painting of smugglers in the late eighteenth century. A rowing boat has landed ashore and two men are taking items out of the boat. A man is rolling a large barrel towards a horse and cart. A sailing ship can be seen out at sea with other small boats close by.]

(Turn over)

SOURCE C

[An illustration showing a gang of child pickpockets in the nineteenth century. A gentleman is looking at a book at a street-side stall. Three boys are standing behind him and one of them is reaching into the pocket of the gentleman's coat.]

(Turn over)

QUESTION 2

This question is about the nature of crimes.

Look at Sources A, B and C, which show changes in the nature of crime over time, and answer the question below.

Use Sources A, B and C to identify ONE similarity and ONE difference in the nature of crime over time. [4 marks]

[Use at least two of the sources to answer the question.]

(Turn over)

11

2
2

Total

--

(Turn over)

QUESTION 5

This question is about methods of punishment.

Explain why prison reformers like John Howard and Elizabeth Fry were important in improving prison conditions in the late eighteenth and early nineteenth centuries.

[12 marks]

(Turn over)

QUESTION 7

This question is about attitudes to punishment.

To what extent have attitudes to punishment changed over time?

[16 marks]

In your answer you should:

- **show how attitudes to punishment have changed over three historical eras**
- **discuss the variations in the extent of change over three historical eras**
- **include direct references to the history of Wales.**

Marks for spelling, punctuation and the accurate use of grammar and specialist language are allocated to this question.

[4 marks]

(Turn over)

36

END OF PAPER

6
10

Total

--

SPaG

4

(Turn over)

