

Surname	Centre Number	Candidate Number
First name(s)		0



GCSE

3601U10-1



WEDNESDAY, 15 JUNE 2022 – AFTERNOON

**DESIGN AND TECHNOLOGY
UNIT 1
ENGINEERING DESIGN**

2 hours

For Examiner's use only		
Question	Maximum Mark	Mark Awarded
1.	10	
2.	10	
3.	15	
4.	20	
5.	20	
6.	25	
Total	100	

ADDITIONAL MATERIALS

In addition to this examination paper, you will need a calculator.

INSTRUCTIONS TO CANDIDATES

Use black ink or black ball-point pen. Do not use gel pen or correction fluid.

You may use a pencil for graphs and diagrams only.

Write your name, centre number and candidate number in spaces at the top of this page.

Answer **all** questions.

Write your answers in the spaces provided in this booklet. If you run out of space, use the continuation page(s) at the back of the booklet, taking care to number the question(s) correctly.

INFORMATION FOR CANDIDATES

The number of marks is given in brackets at the end of each question or part question. You are advised to divide your time accordingly.

The total number of marks available is 100.

You are reminded of the need for good English and orderly, clear presentation in your answers.

The quality of your written communication, including appropriate use of punctuation and grammar, will be assessed in your answer to question 4(c).

Answer **all** questions.

1. Study the photos below. The glass bottles have been recycled to become roof insulation.



Glass Bottles



Roof Insulation

(a) Explain an environmental advantage of recycling the glass bottles into roof insulation. [2]

.....

.....

.....

- (b) A laptop computer has an aluminium case. The raw aluminium ore is sourced from South America, then processed and manufactured in China to be sold in the United Kingdom (UK).



- (i) Describe **one** benefit this has for UK consumers. [2]

.....

.....

.....

- (ii) Describe why the laptop has a high carbon footprint. [2]

.....

.....

.....

- (c) Explain how a manufacturer could produce the aluminium laptop for the UK market in a more sustainable way. [4]

.....

.....

.....

.....

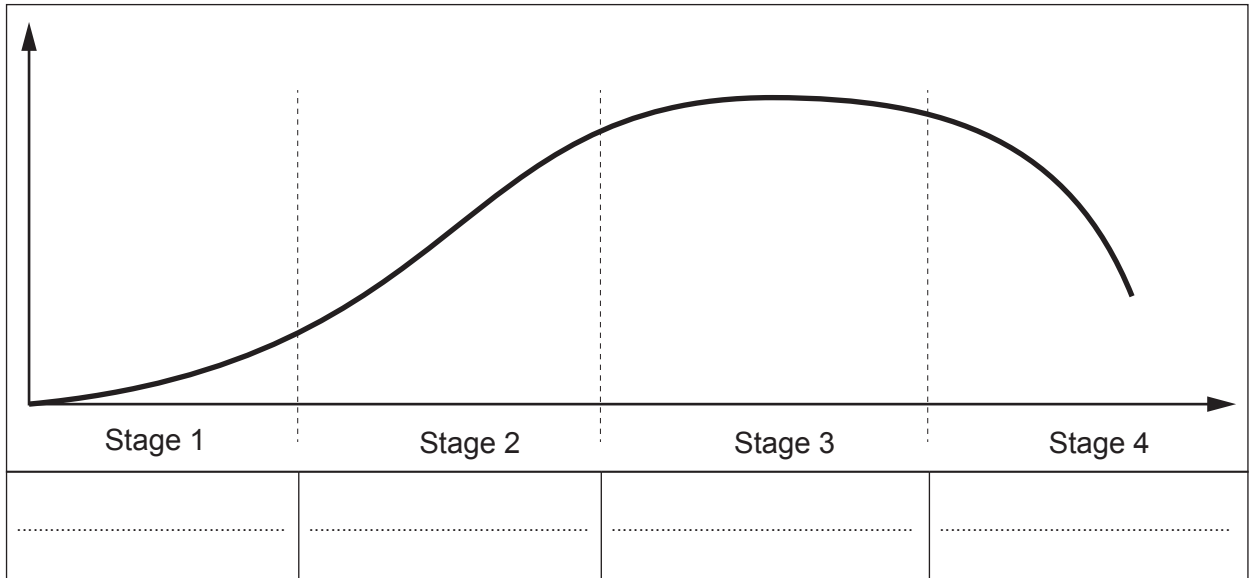
.....

3601U101
03

2. The graph below shows a product life cycle.

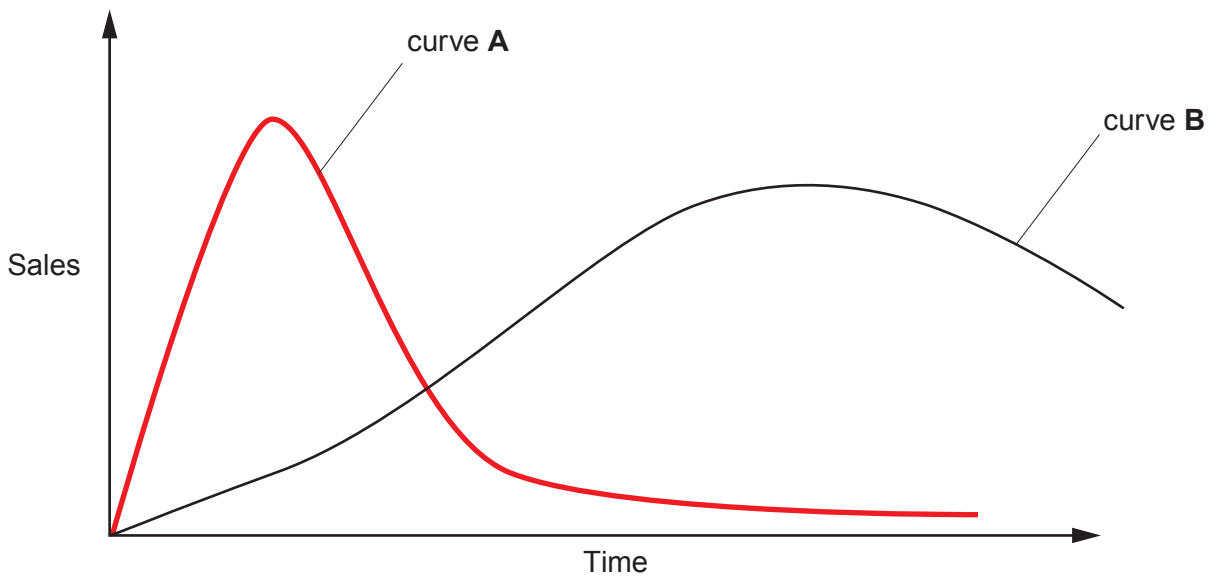
(a) Label the **four** stages of a product life cycle in the table below.

4 x [1]



(b) The graph below shows the product life cycle for two different products. Match the curve to the appropriate product by writing **A** or **B** in the correct box below.

[2]



Fidget spinner matches curve

Smart watch matches curve

(c) Explain what is involved in a **Life Cycle Analysis** when bringing new products to the market. [4]

.....

.....

.....

.....

.....





.....

3601U101
05

3. The images below show different energy sources.

(a) Complete the table below by stating whether the energy source is renewable or non-renewable.

4 x [1]

Energy source	Renewable/non-renewable
<p style="text-align: center;">Coal</p> 	<p style="text-align: center;">.....</p>
<p style="text-align: center;">Nuclear</p> 	<p style="text-align: center;">.....</p>
<p style="text-align: center;">Solar</p> 	<p style="text-align: center;">.....</p>
<p style="text-align: center;">Wind</p> 	<p style="text-align: center;">.....</p>

(b) Describe **one** advantage for **each** energy source.

4 x [2]

Energy source	Advantage
Coal	<hr/> <hr/> <hr/> <hr/>
Nuclear	<hr/> <hr/> <hr/> <hr/>
Solar	<hr/> <hr/> <hr/> <hr/>
Wind	<hr/> <hr/> <hr/> <hr/>

(c) Explain why solar panels are not yet widely used on electric cars.

[3]

4. Apple is a leading technology company. Apple regularly uses aluminium for the case or body on its products.

(a) Describe **two** properties of aluminium that make it suitable for the body or casing of Apple products. 2 x [2]

Property 1:

.....
.....
.....

Property 2:

.....
.....
.....

(b) Apple occasionally releases special edition products such as the 'RED' phone.

(i) Explain why the 'RED' phone would be batch produced. [3]

.....
.....
.....
.....
.....

(ii) Components for the manufacturing of the 'RED' phone are ordered using JIT (Just In Time). Explain the term 'Just in Time'. [3]

.....
.....
.....
.....
.....

5. A games controller contains electrical and mechanical components.



(a) A commercially produced printed circuit board (PCB) may require a protective surface finish like a solder mask or solder resist. Explain why this protective surface finish is required within the context of a commercial soldering process. [5]

.....

.....

.....

.....

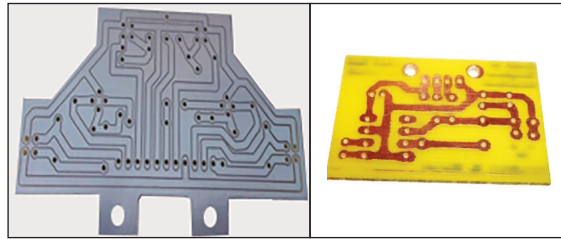
.....

.....

.....

.....

(b) Study the two images of prototype printed circuit boards (PCBs) shown below.



(i) Describe why copper is used for the solder side of the PCB. [2]

.....

.....

.....

(ii) Name a suitable material for the component side of the PCB and discuss a physical property that makes it appropriate.

Name of material: [1]

Physical property: [2]

.....

.....

.....

(c) Evaluate the process of soldering a prototype PCB within a typical school workshop environment in comparison with commercial processes. [5]

.....

.....

.....

.....

.....

.....

.....

.....

.....

.....

- (d) Mechanical properties must be considered when selecting materials for the body/case of the games controller. Evaluate the mechanical material properties required. [5]

Examiner
only



.....

.....

.....

.....

.....

.....

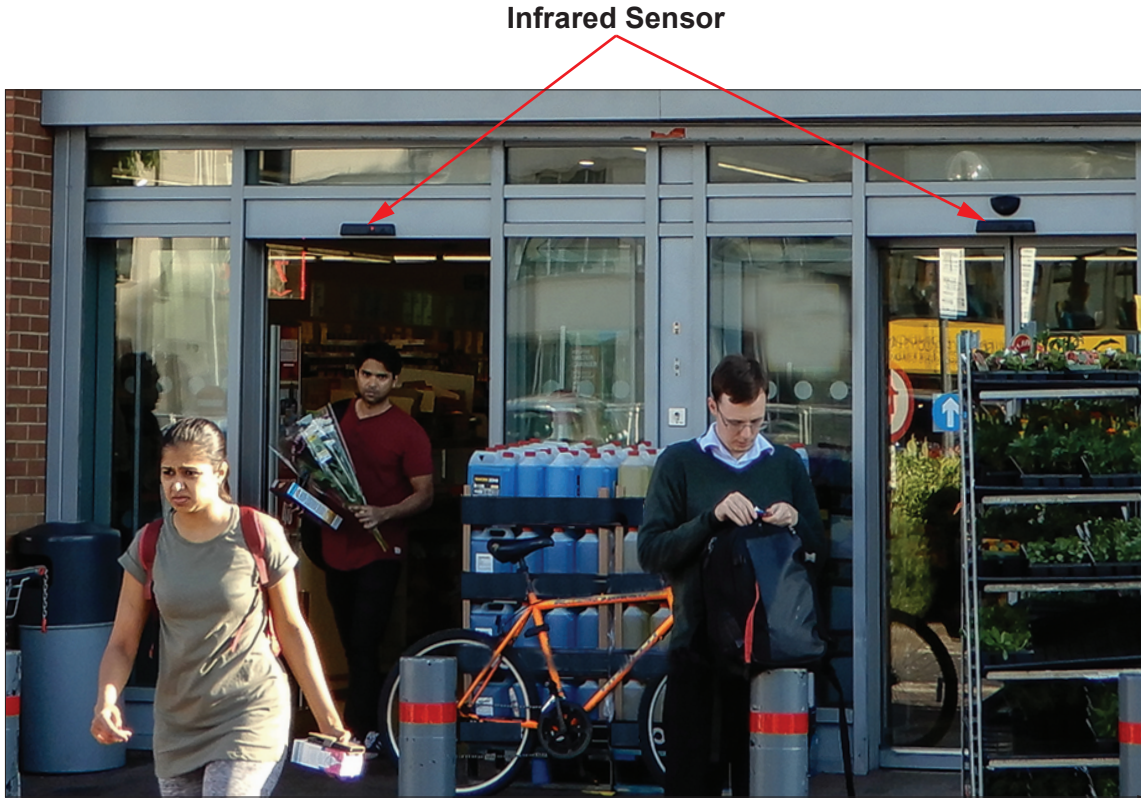
.....

.....

.....

BLANK PAGE

6. An automatic door system is shown below. A programmable control system operates the door. The system has an **Infrared Sensor** which senses a person's body heat. The **Infrared Sensor** is 'on' when a person stands in front of it. The **Infrared Sensor** is 'off' when no one is in front of the sensor.



- (a) (i) Explain why a flowchart could be used when programming the control system. [2]

.....

.....

.....

- (ii) Explain **one** advantage of using a macro or subroutine when programming. [2]

.....

.....

.....

(iii) Draw a block diagram for the automatic door system in the space below.

[4]

Examiner
only



(iv) Explain why a designer or engineer might use a block diagram.

[2]

.....

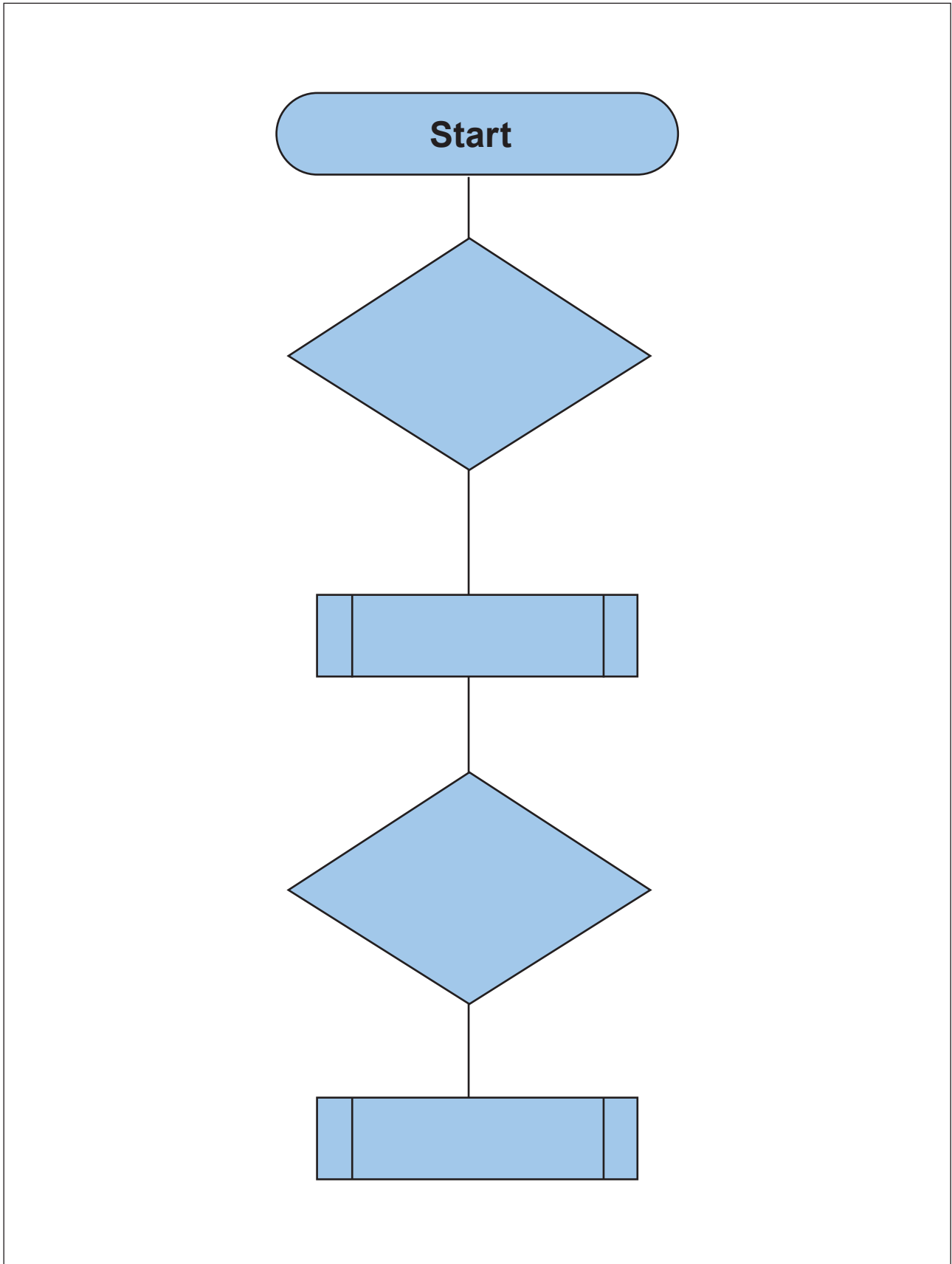
.....

.....

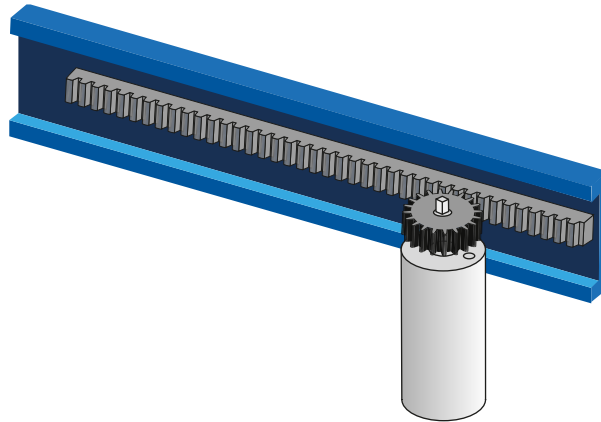
- (b) Complete the flowchart for the automatic door below by adding the correct statements and missing feedback loops. [9]

Examiner
only

Note: do not write the subroutines themselves.



(c) The mechanical system used in the automatic door is shown below.

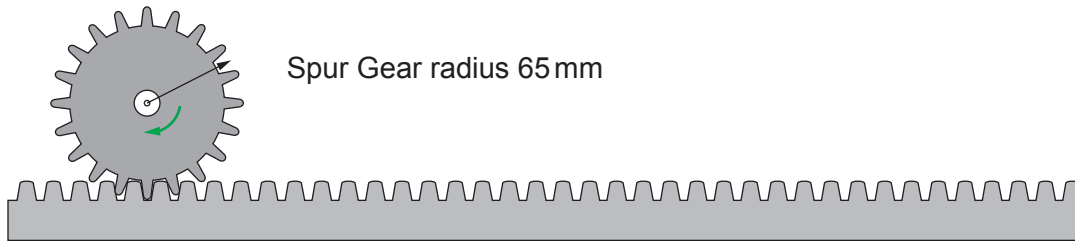


(i) State the correct name of the gear system shown above. [1]

.....

(ii) The diagram below shows the Spur Gear with a radius of 65 mm. Calculate the distance in mm the door will move in one rotation of the gear. [3]

(Show all workings)



.....

.....

.....

.....

.....

.....

- (iii) The table below shows a parts list for the automatic door.
Calculate the total cost and the total inclusive of 20% VAT.

[2]

Examiner
only

Part	Unit cost (£)	Number required	Cost (£)
Motor	£100	2
Infrared sensor	£150	2
Gears	£40	2
Control system	£200	1
Total cost (£)		
Total cost (£) inclusive of 20% VAT		

END OF PAPER

