



GCSE

3660U30-1

WEDNESDAY, 22 JUNE 2022 – MORNING

MUSIC

Unit 3 – Appraising

1 hour approximately plus your additional time allowance

Surname _____

First name(s) _____

Centre Number _____

Candidate Number 0 _____

For Examiner's use only		
Question	Maximum Mark	Mark Awarded
1.	9	
2.	9	
3.	9	
4.	9	
5.	9	
6.	9	
7.	9	
8.	9	
Total	72	

INSTRUCTIONS TO CANDIDATES

Use black ink or black ball-point pen, or your usual method.

Write your name, centre number and candidate number in the spaces provided on the front cover.

Answer ALL questions.

Answers to all questions, including rough work, should be made in the spaces provided in the answer booklet.

Answers in music notation may be written in pencil.

INFORMATION FOR CANDIDATES

The appraising examination consists of 8 questions on the areas of study.

Full instructions are included on the CDs which will be played to you.

The maximum mark for this paper is 72.

The quality of written communication and the accurate use of specialist terminology will be assessed in QUESTION 2.

(Turn over)

The allocation of marks is given at the end of each question or part-question.

At the end of the examination this answer booklet must be handed to the invigilator.

You will have 2 MINUTES to read through the questions.

Answer ALL questions.

AREA OF STUDY 1: MUSICAL FORMS AND DEVICES

- 1. PREPARED EXTRACT.** Listen to the following extract from the Peer Gynt Suite No.1 (Op.46). A skeleton score of the first 8 bars is provided on the opposite page and the extract will be played **THREE** times with a **30 SECOND** pause between each playing. There will be a **2 MINUTE** silence after the final playing for you to complete your answers.

You now have **1 MINUTE** to read the questions and look at the score before the first playing of the extract.

You may wish to place a tick (✓) in the box each time you hear the extract. [9 marks]

(Turn over)

1 (a) **UNDERLINE** the **SECTION** heard at the **START** of the extract. [1 mark]

SECTION A

SECTION A1

SECTION A2

(b) Give the full name of the **KEY** at the **START** of the extract (for example, C Major). [1 mark]

(c) State the **TEXTURE** in the **SECOND BAR** of the extract. [1 mark]

(d) (i) **UNDERLINE** the **INTERVAL** between the two notes marked **WITH A BRACKET** . [1 mark]

3rd

4th

5th

6th

(ii) **UNDERLINE** the word that describes the **MELODY** in the **SAME BAR**. [1 mark]

CHROMATIC

CONJUNCT

DISJUNCT

SCALIC

(Turn over)

1 (e) Give the meaning of the word **ARCO**. [1 mark]

(f) Name the **ORNAMENT** heard at **X** on the score. [1 mark]

(g) Name the **COMPOSER** of this piece of music. [1 mark]

(h) **UNDERLINE** the **DATE** when this music was originally composed. [1 mark]

1775

1825

1875

1925

9

(Turn over)

2. You will now hear another extract, which will be played **THREE** times. There will be a **30 SECOND** pause between each playing and a **5 MINUTE** silence after the final playing for you to complete your answer.

The extract is based on the following text:

**And He shall purify the sons of Levi,
That they may offer unto the Lord an
offering in righteousness.**

You now have **30 SECONDS** to read the question before the first playing of the extract.

You may wish to place a tick (✓) in the box each time you hear the extract. [9 marks]

2. In the extract, describe the use of:

- INSTRUMENTS
- VOICES
- PERFORMANCE TECHNIQUES/ARTICULATION
- TEXTURE

In your answer you must refer to all FOUR elements. You may make rough notes on the next page and begin your answer on the page 10.

The quality of written communication and the accurate use of specialist terminology will be assessed in this question.

ROUGH NOTES

A large, empty rectangular box with a thin black border, occupying most of the page. It is intended for students to write rough notes during a lecture or presentation.

(Turn over)

AREA OF STUDY 2: MUSIC FOR ENSEMBLE

3. You will now hear a version of **DACW 'NGHARIAD**. It will be played **FOUR** times with a **30 SECOND** pause between each playing. There will be a **3 MINUTE** silence after the final playing for you to complete your answers.

You now have **1 MINUTE** to read the questions before the first playing of the extract.

You may wish to place a tick (✓) in the box each time you hear the extract. [9 marks]

- 3 (a) After the introduction, complete the missing RHYTHM in the first two bars of the VOCAL PART, WHICH IS ON THE OPPOSITE PAGE. The pitches are provided. [4 marks]**

3 (b) Name the INSTRUMENT accompanying in the extract. [1 mark]

(c) UNDERLINE the TONALITY of the extract. [1 mark]

MAJOR MINOR MODAL

(d) UNDERLINE the MUSICAL STYLE heard in the extract. [1 mark]

BAROQUE BLUES CERDD DANT WELSH FOLK

3 (e) Tick (✓) TWO MELODIC FEATURES heard in the extract. [2 marks]

MELODIC FEATURE	TICK (✓)
Anacrusis	
Answering phrase	
Chromatic movement	
Countermelody	
Sequence	
Trill	

4. You will now hear two extracts from the musical **Cats**. Each extract will be played **THREE** times in the order shown below with a **30 SECOND** pause between each playing. There will be a **2 MINUTE** silence after the final playing for you to complete your answers.

You now have **30 SECONDS** to read the questions.

You may wish to place a tick (✓) in the box each time you hear the extracts. [9 marks]

1	1	2	2	1	2

(Turn over)

EXTRACT 1

4 (a) State the TONALITY of the extract. [1 mark]

(b) UNDERLINE the TIME SIGNATURE of the music. [1 mark]

3	4	5	9
4	4	4	8

(c) Give a suitable ITALIAN TERM for the TEMPO of the extract. [1 mark]

EXTRACT 2

4 (d) The soloist sings a broken chord at the start of the extract. UNDERLINE the CHORD. [1 mark]

DOMINANT 7th

SUBDOMINANT

TONIC

(e) Describe TWO MELODIC features of the BRASS parts. [2 marks]

1. _____

2. _____

BOTH EXTRACTS

- 4 (f) In the table below, tick (✓) **TWO** features heard in **EXTRACT 1 ONLY** and tick (✓) **ONE** feature heard in **BOTH EXTRACTS**. [3 marks]

	EXTRACT 1 ONLY (TICK 2)	BOTH EXTRACTS (TICK 1)
SWING STYLE		
SYNCOPIATION		
TRIPLET FIGURES		

AREA OF STUDY 3: FILM MUSIC

5. You will now hear an extract from a piece of film music. It will be played **THREE** times with a **30 SECOND** pause between each playing. There will be a **1 MINUTE** silence after the final playing for you to complete your answers.

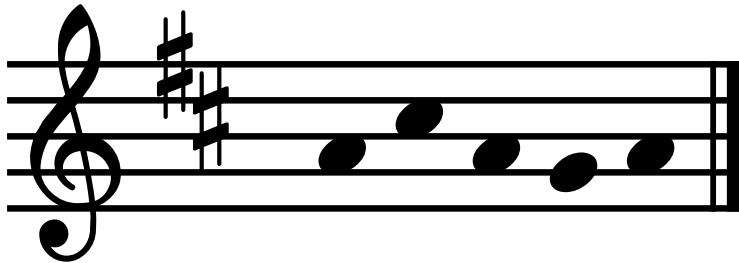
You now have **30 SECONDS** to read the questions before the first playing of the extract.

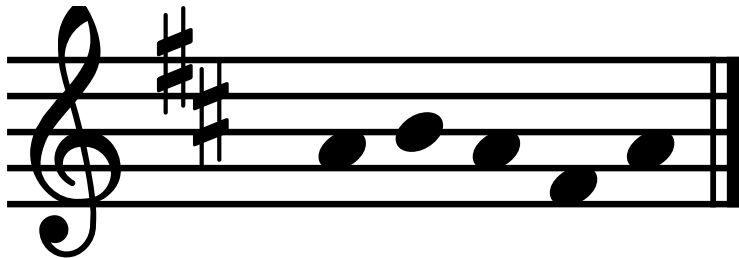
You may wish to place a tick (✓) in the box each time you hear the extract. [9 marks]

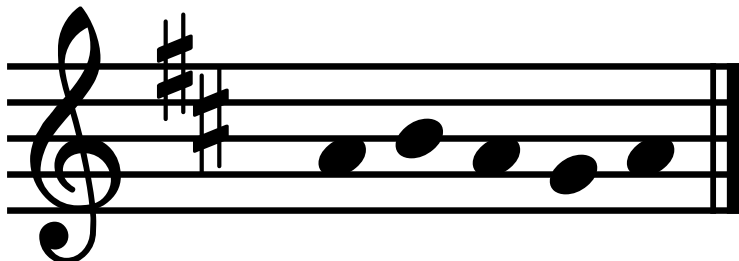
- (a) Name the **SOLO INSTRUMENT**. [1 mark]
-

(Turn over)

- 5 (b) Tick (✓) the correct PITCHES heard by this instrument at the start of the extract. [1 mark]







- (c) The KEY SIGNATURE has TWO sharps. Identify the KEY (for example, C Major) of the extract.

[1 mark]

- (d) the INSTRUMENT heard in the accompaniment. [1 mark]

GUITAR

HARPSICHORD

ORGAN

PIANO

(Turn over)

5 (e) Describe the **TEXTURE** of the music. [2 marks]

(f) Describe the **HARMONY** throughout the extract. [2 marks]

(g) **UNDERLINE** the **MELODIC FEATURE** heard at the **END** of the extract. [1 mark]

ANTICIPATION NOTE ARPEGGIO

BLUE NOTE TRILL

9

(Turn over)

6. You will now hear two extracts of film music. Each extract will be played **THREE** times with a **30 SECOND** pause between each playing. There will be a **2 MINUTE** silence after the final playing for you to complete your answers.

You now have **30 SECONDS** to read the questions before the first playing of the first extract.

You may wish to place a tick (✓) in the box each time you hear the extracts. [9 marks]

EXTRACT 1			
------------------	--	--	--

EXTRACT 2			
------------------	--	--	--

EXTRACT 1

6 (a) State the TIME SIGNATURE of the music. [1 mark]

(b) Identify how the TIMBRE of the TRUMPET has been changed. [1 mark]

(c) Identify the instrument performing a GLISSANDO in the extract. [1 mark]

(d) State the TONALITY of the music. [1 mark]

EXTRACT 2

6 (e) Name the SOLO INSTRUMENT heard in the extract. [1 mark]

(f) UNDERLINE the FAMILY OF INSTRUMENTS accompanying the solo. [1 mark]

BRASS PERCUSSION STRINGS WOODWIND

(g) Suggest a DYNAMIC marking for the START of this extract. [1 mark]

(h) UNDERLINE TWO MUSICAL FEATURES of the accompaniment. [2 marks]

ALBERTI BASS

ARPEGGIO

DRONE

OSTINATO

PERFECT 5th INTERVAL

SFORZANDO

9

(Turn over)

AREA OF STUDY 4: POPULAR MUSIC

7. **PREPARED EXTRACT.** Listen to the following extract from **EVERYTHING MUST GO**, which will be played **THREE** times. There will be a **30 SECOND** pause between each playing and a **2 MINUTE** silence after the final playing for you to complete your answers.

You now have **30 SECONDS** to read the questions before the first playing of the extract.

You may wish to place a tick (✓) in the box each time you hear the extract. [9 marks]

- (a) **UNDERLINE** the **TEMPO** of the music. [1 mark]

110bpm

135bpm

160bpm

185bpm

(Turn over)

7 (b) **UNDERLINE** the word which describes the drum kit **RHYTHM** at the **START** of the piece. [1 mark]

DOTTED

ROCK RHYTHM

SWUNG

SYNCOPIATION

TRIPLETS

(c) Give **ONE** feature of the **GUITAR** part in the **VERSE**. [1 mark]

(d) Name the **SECTION** of the song with the lyrics '**FREED FROM THE MEMORY**'. [1 mark]

(e) Complete the first **FOUR CHORDS** as heard in the **CHORUS**. [2 marks]

E			E
----------	--	--	----------

7 (f) Describe the **STRING PARTS** in the **CHORUS**.

[1 mark]

(g) Name the **BAND** performing the extract. [1 mark]

(h) Name the specific **MUSICAL STYLE** of this piece of music. [1 mark]

8. Finally, you will hear an extract of popular music, which will be played **THREE** times. There will be a **30 SECOND** pause between each playing and a **2 MINUTE** silence after the final playing for you to complete your answers.

You now have **30 SECONDS** to read the questions before the first playing of the extract. The lyrics of the extract have been printed page 32.

You may wish to place a tick (✓) in the box each time you hear the extract. [9 marks]

8 (b) Describe THREE musical features of the INTRODUCTION. [3 marks]

1. _____

2. _____

3. _____

(c) Name TWO WIND INSTRUMENTS playing in the extract. [2 marks]

1. _____

2. _____

8 (d) In lines 1–6, identify the line number (as shown above) where a: [2 marks]

DRUM FILL can FIRST be heard.	Line _____
chord change is FIRST heard in the song.	Line _____

(e) Name the **MUSICAL STYLE** of this piece. [1 mark]

9

END OF PAPER

**arco divisa
a tempo**

p

3

Texture?

X

Copyright ©

5

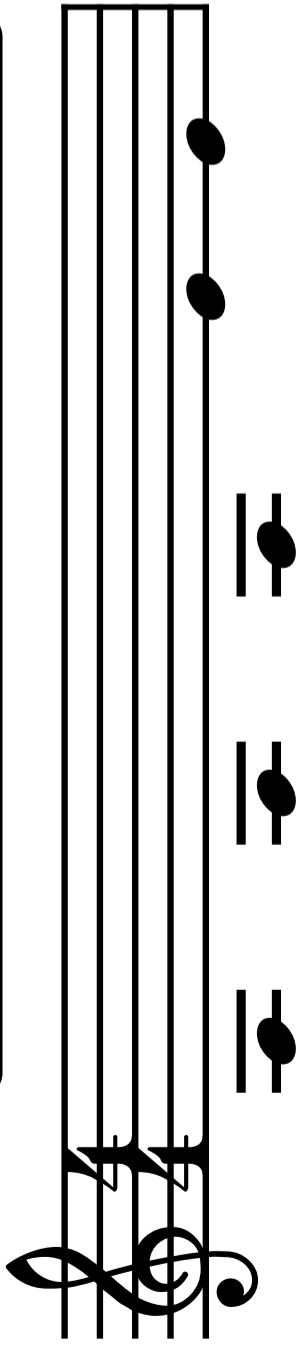
6

9

Melody?

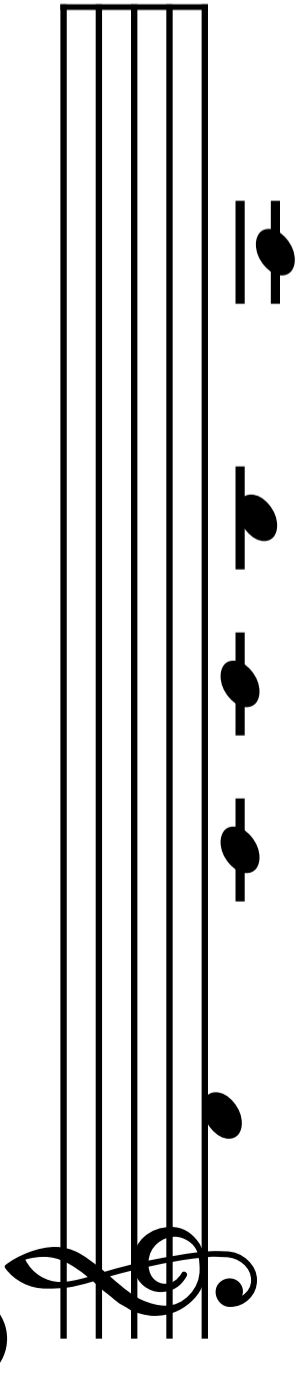
etc.

Rhythm



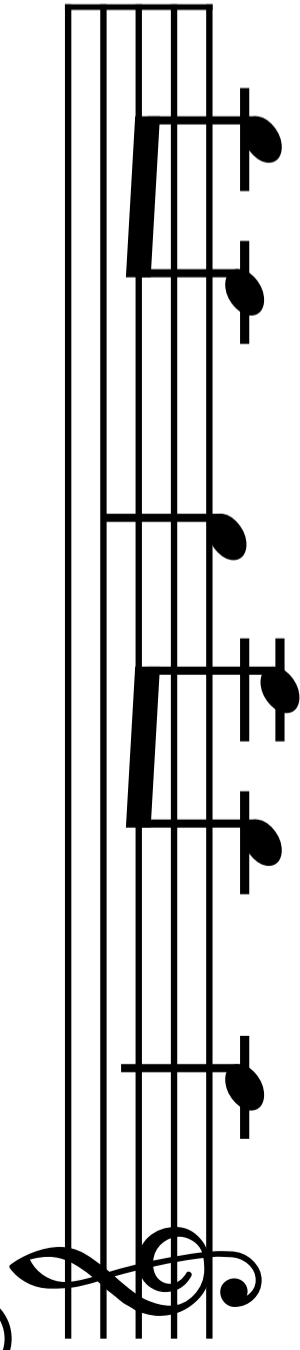
Da - cw 'ngha-riad i

Rhythm



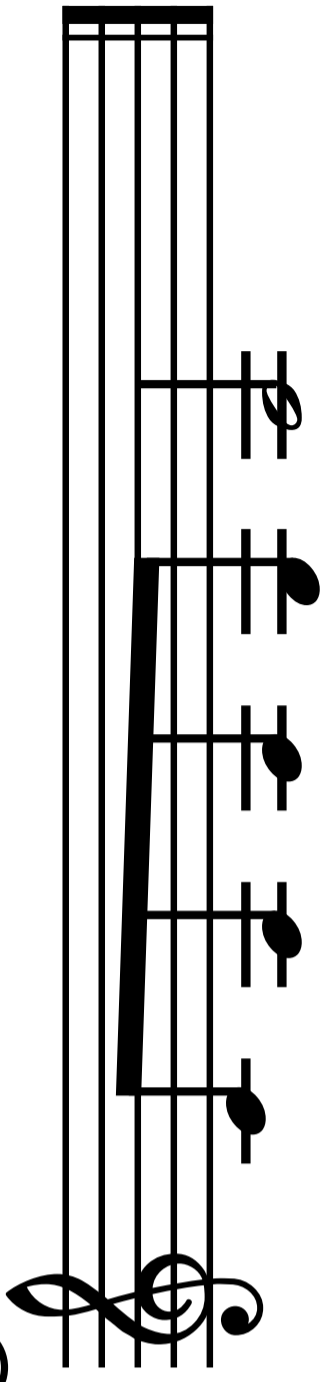
lawr yn y ber - llan;

③



tw rym-di ro rym-di

④



ra - dl id - l al.