



National
Qualifications
2022

X823/77/11

Engineering Science

WEDNESDAY, 18 MAY

1:00 PM – 3:30 PM

Total marks — 75

You may refer to the **Advanced Higher Engineering Science Data Booklet**.

SECTION 1 — 35 marks

Attempt ALL questions.

SECTION 2 — 40 marks

Attempt ALL questions.

Write your answers clearly in the answer booklet provided. In the answer booklet, you must clearly identify the question number you are attempting.

For questions 3 (b), 4 (a) and 9 (a), write your answers clearly in the worksheets provided in the answer booklet.

Show all working and units where appropriate.

The number of significant figures expressed in a final answer should be equivalent to the least significant data value given in the question. Answers that have two more figures or one less figure than this will be accepted.

Use **blue** or **black** ink. Sketches, diagrams and graphs may be drawn in pencil.

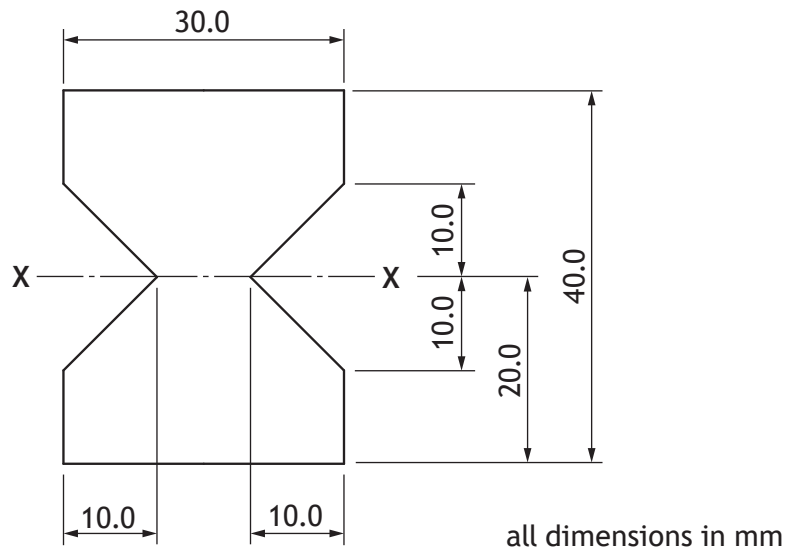
Before leaving the examination room you must give your answer booklet to the Invigilator; if you do not, you may lose all the marks for this paper.



* X 8 2 3 7 7 1 1 *

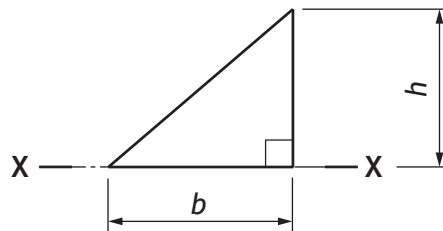
SECTION 1 — 35 marks
 Attempt ALL questions

1. A beam has the symmetrical cross-section shown below.



Note that the second moment of area of a triangle about its base is given by the equation below.

$$I_{xx} = \frac{bh^3}{12}$$



Calculate the second moment of area of the cross-section about axis X-X.

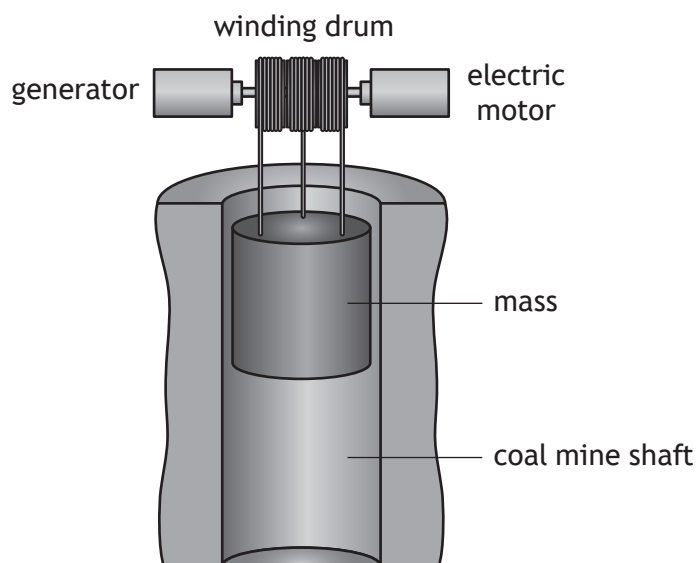
3

2. The electricity supply to the UK is based on a collection of fossil fuel, nuclear, hydro and renewable energy power stations connected to a distribution grid.

- (a) Explain why it is necessary to include hydro-electric pump storage systems as part of the electrical supply for the UK.

2

An innovative solution to the storage of electricity is to use a large mass that can be raised or lowered in a disused coal mine shaft. The mass is raised by an electric motor when surplus electricity is available; when electricity is required the mass can fall, driving a generator as it does so.



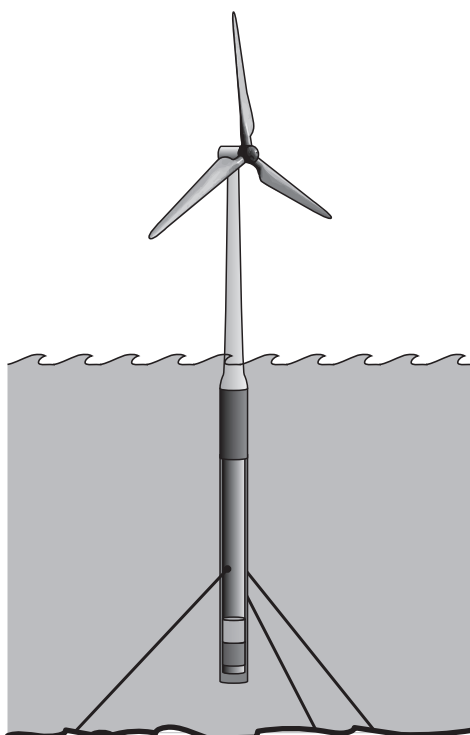
The motor has an efficiency of 96%, the generator 94% and there is a 3% loss in the mechanical system when raising and a 3% loss when lowering.

- (b) Calculate the amount of electricity available from this storage system for every 1 unit of electricity produced prior to storage.

2

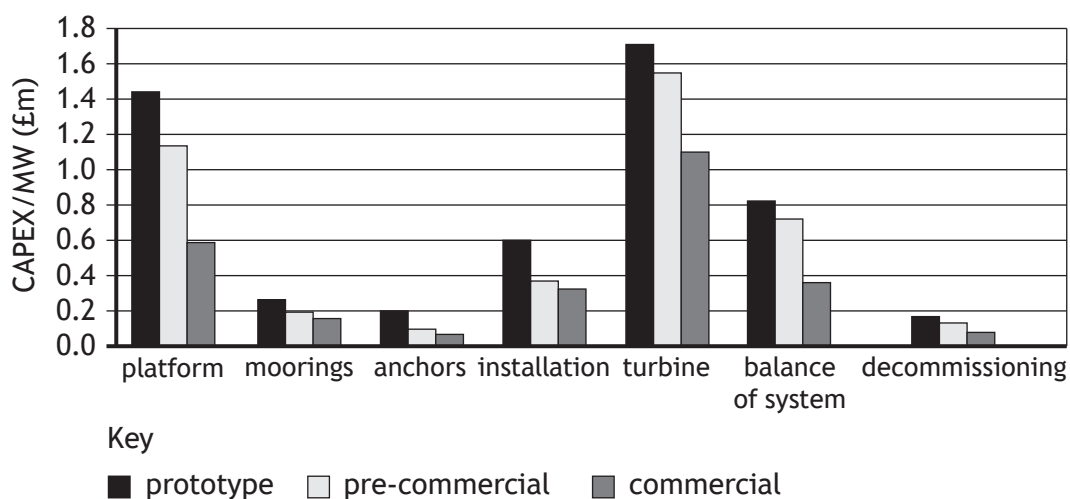
[Turn over

3. Floating wind power is an emerging technology with a UK industry generation ambition of 5 GW in the near future. The expected generation in 2021 was 80 MW.



The graph below shows the predicted change in capital costs for the various components of the system as they progress from prototype to commercial production.

Note: CAPEX/MW (£m) — CAPital EXpenditure per Mega Watt



- (a) Describe what capital costs are and explain why there is a predicted downward trend in the capital costs.

3. (continued)

During the installation of a turbine prototype, a project manager divided the project into eight stages, A–H, identified the precedents for each stage and the planned duration of each stage. The information is detailed in the precedence table below.

Stage	Precedents	Duration
A	----	4
B	----	1
C	B	4
D	A, B	7
E	C	3
F	E	6
G	A, C	7
H	D, F, G	3

(b) Using the precedence table and the worksheet for question 3 (b)

(i) complete the Gantt chart for stages G and H of the project, showing the timing of each stage including floats

1

(ii) identify the critical path for this project.

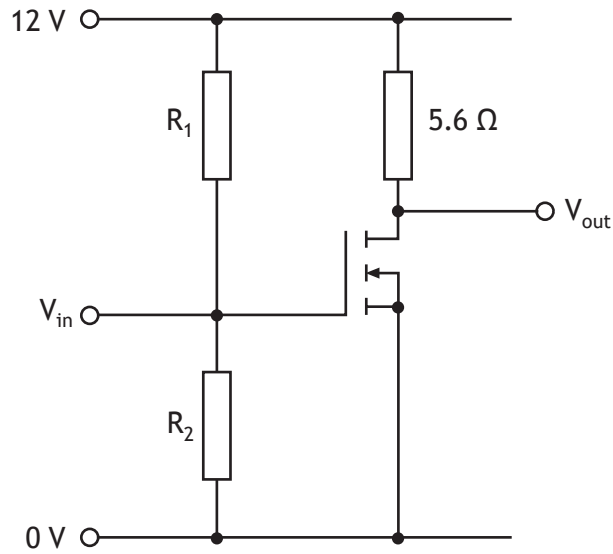
1

(c) Describe how the project manager would use the information in the Gantt chart to manage the project effectively.

2

[Turn over

4. A simple audio amplifier circuit is being tested by a student. The circuit diagram is shown below.



The MOSFET must be biased in the **saturation** region.

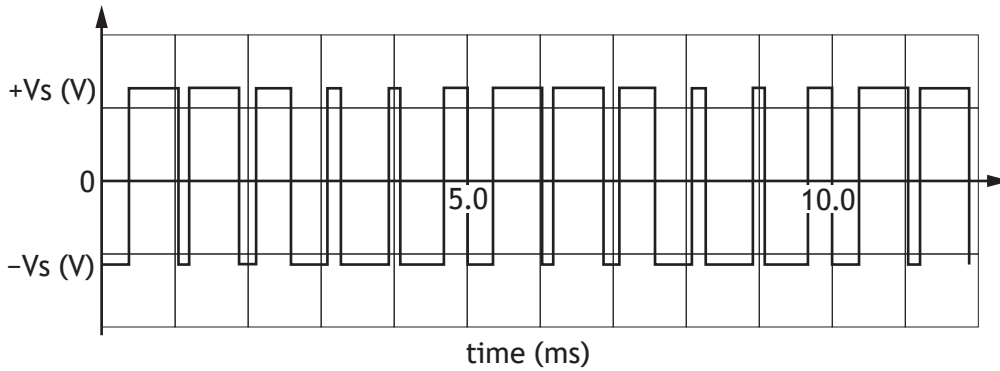
- (a) Draw the load line for the circuit on the **worksheet for question 4 (a)** and identify the most suitable value for V_{GS} to allow maximum output voltage swing. 3

Design rule: The combined resistance of R_1 in parallel with R_2 is 100 k Ω .

- (b) Calculate suitable values for R_1 and R_2 . 2

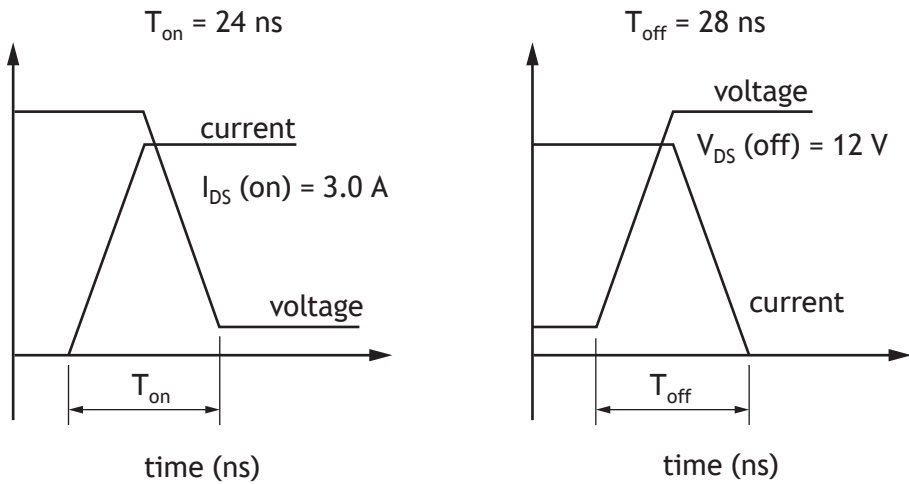
5. A pulse-width modulation (PWM) signal from a microcontroller is amplified by a MOSFET circuit. The amplified PWM signal is shown below.

MARKS



The MOSFET dissipates power when conducting and when **switching on and off**.

The graphs below show a magnified view of the V_{DS} and I_{DS} values when a MOSFET **switches on and off**.



When each MOSFET **switches on and off** it experiences a switching energy loss given by the formula below.

$$E_{Switching} = \frac{1}{2} V_{DS(off)} (T_{on} I_{DS(on)} + T_{off} I_{DS(on)})$$

The switching power is calculated using the formula below.

$$P_{Switching} = E_{Switching} \times frequency$$

The *frequency* is the number of times that the MOSFET switches on and off in each second.

Determine the MOSFET switching power loss for this MOSFET.

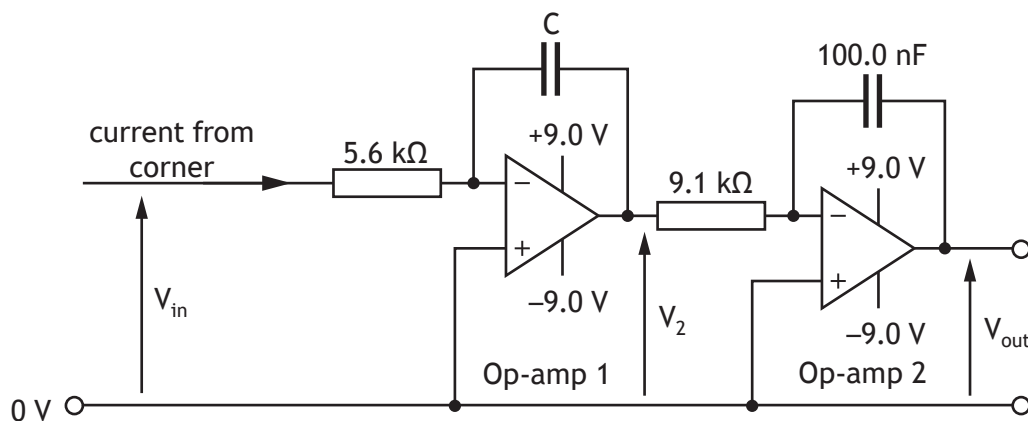
4

[Turn over

6. A touchscreen system used to control a robotic arm is shown below. When the user touches the screen, current is drawn from electrodes at each corner and is 'earthed' through their finger.



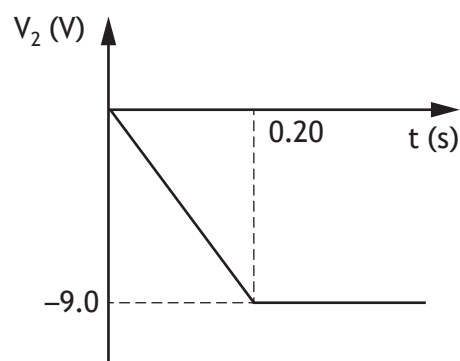
The current flow from each corner is processed by an integrator circuit, similar to the one shown below, and a voltage signal is produced.



Assume that the op-amps are ideal. At $t = 0$ s both V_2 and V_{out} are 0 V.

For one position on the screen, $V_{in} = 5.0$ V.

The graph of V_2 is shown below.



6. (continued)

(a) Calculate the value of capacitor, C.

2

The capacitor, C, calculated in part (a) is replaced with a 33 μF capacitor.

(b) Describe how this change in capacitance affects the time taken for op-amp 1 to saturate.

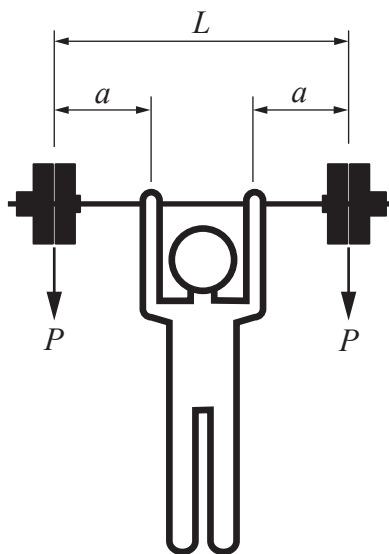
1

(c) Determine, in its simplest form, the expression for V_{out} in terms of t.

3

[Turn over

7. A weightlifter lifts a total mass of 190 kg on a bar that measures 1.50 m between the loads. The weightlifter's hands are both 0.50 m from the loads. The bar is made from a low-alloy steel tube: it has an external diameter of 29.0 mm and a second moment of area of $21 \times 10^3 \text{ mm}^4$.



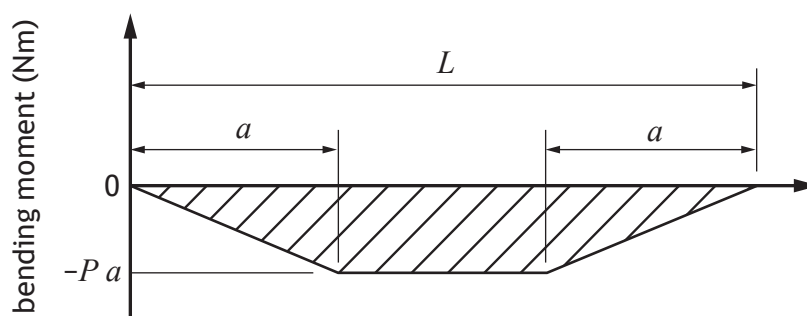
The deflection of a simply supported beam with two equally spaced vertical loads is given by the formula below.

$$\delta_{max} = \frac{Pa}{24EI} (3L^2 - 4a^2)$$

- (a) Calculate the maximum deflection of the bar due to the applied loads. 3

The diagram below is a sketch of the shape of the bending moment diagram for the bar as it is being held above the weightlifter, as described above.

The magnitude of the bending moment reaches a maximum where the weightlifter grips the bar.



- (b) Determine the maximum stress in the bar when it is stationary above the weightlifter. 2

7. (continued)

The ultimate tensile and compressive stresses for low-alloy steels lie in the range 680–2400 Nmm⁻².

- (c) Compare the suitability of low-alloy steel for this application at both ends of the range in terms of the safety of the weightlifter. You should refer to your answer in part (b).

1

[Turn over

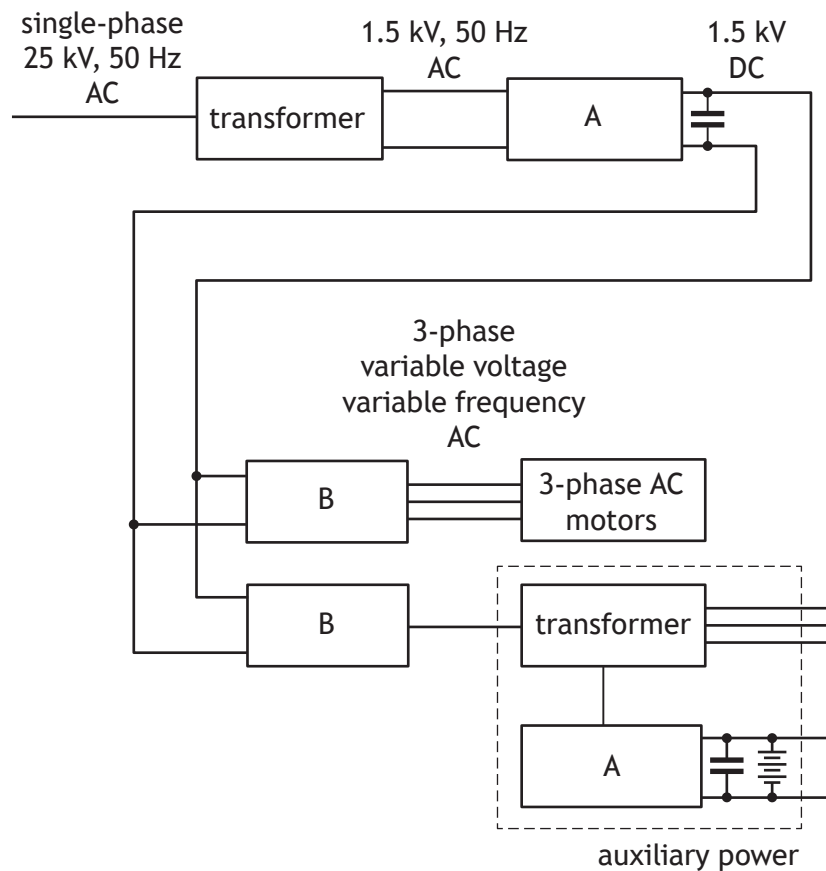
[BLANK PAGE]

DO NOT WRITE ON THIS PAGE

Attempt ALL questions



8. A high-speed passenger train is powered from a single overhead 25 kV, 50 Hz AC cable. A block diagram of the locomotive electrical system is given below.



- (a) State the names given to sub-systems A and B and explain the need for both in order to drive the locomotive's motors.

3

As the high-speed passenger train begins to accelerate, a step-down transformer on the locomotive draws 5.2 MVA of power at full load from the overhead 25 kV AC supply cable (1 MVA is equivalent to 1 MW). The transformer output voltage is 1.5 kV. The power loss in the transformer core is 2.5 kW. Currents in the primary and secondary windings also cause power loss. The primary winding of the transformer has a resistance of 482 m Ω and the secondary winding has a resistance of 1.74 m Ω .

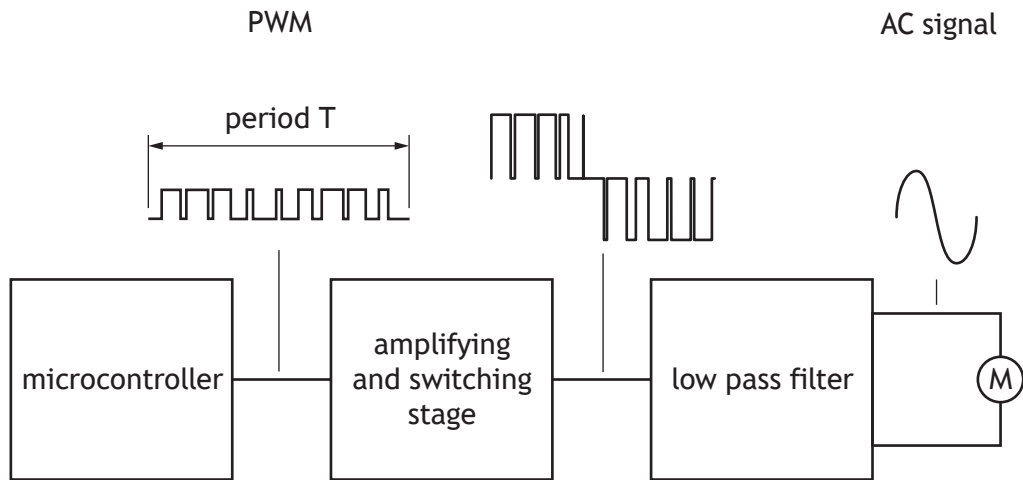
- (b) Calculate the current in the secondary winding and hence the resistive power loss in the secondary winding.

4

[Turn over

8. (continued)

A student investigating AC motor speed control uses a form of pulse-width modulation (PWM) to control a single-phase AC motor as shown below.



The period of the PWM signal matches the period of the AC output signal. Varying the PWM signal period allows the speed of the motor to be varied.

The program opposite produces a PWM signal of 59.5 Hz which is used to control the speed of an AC motor. **Twelve** values are stored in a data table. The values are used to adjust the duty cycle and produce the PWM signal. Elsewhere, the microcontroller has been configured to produce a PWM signal with a frequency of 15.6 kHz on the output pin.

Arduino	PBasic
<pre>int i; int duty; int table[] = {128, 192, 238, 255, 238, 192, 128, 64, 18, 0, 18, 64}; void setup() { pinMode(6, OUTPUT); } void loop() { for (i = 1; i <= 12; i = i + 1) { analogWrite(6, table[i]); delayMicroseconds(1400); } }</pre>	<pre>symbol i = b0 symbol duty = b1 table (128, 192, 238, 255, 238, 192, 128, 64, 18, 0, 18, 64) main: for i = 1 to 12 readtable i, duty pwmduty b.6, duty pauseus 140 next i goto main</pre>
<p>Command analogWrite(<i>pin</i>, <i>value</i>) Parameters pin: the Arduino pin to write to value: the duty cycle: between 0 (always off) and 255 (always on)</p> <p>delayMicroseconds (<i>value</i>) value: the number of microseconds to pause</p>	<p>Command pwmduty, <i>pin</i>, <i>duty</i> Parameters pin: a variable/constant which is the pin to write to duty: the duty cycle: between 0 (always off) and 255 (always on)</p> <p>pauseus <i>value</i> value: multiples of 10 microseconds to pause</p>

Example

50% duty cycle – duty value = 128



25% duty cycle – duty value = 64



(c) Explain how the period, T , of the signal could be varied within the program.

2

PWM duty values could be calculated within the program during each loop rather than reading them from a data table, as in the program above.

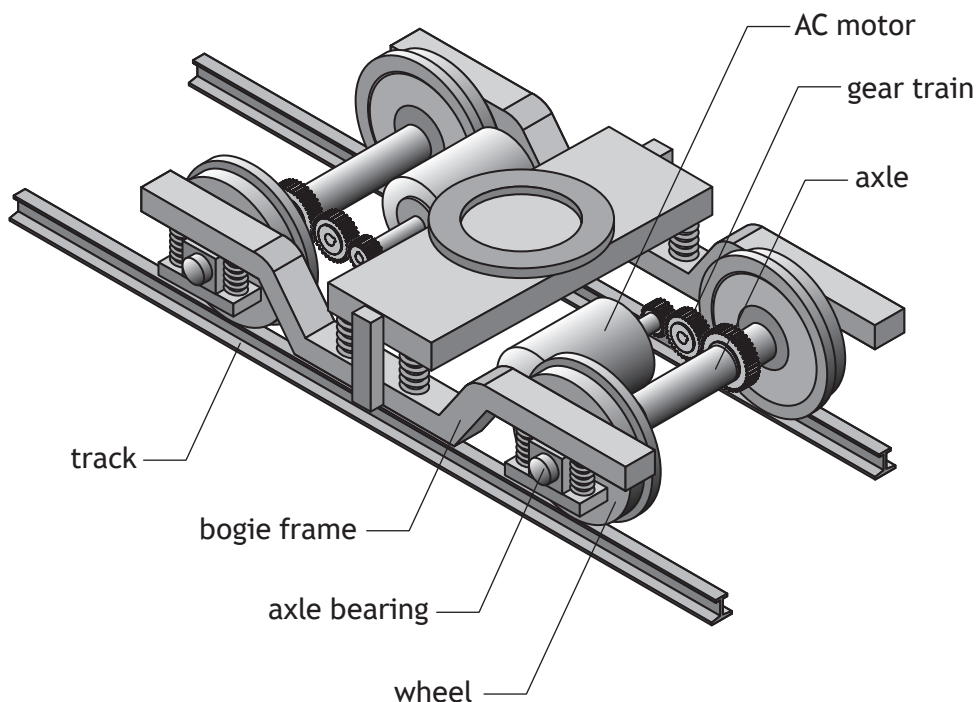
(d) Explain which of the two methods would produce the most accurate output waveform.

2

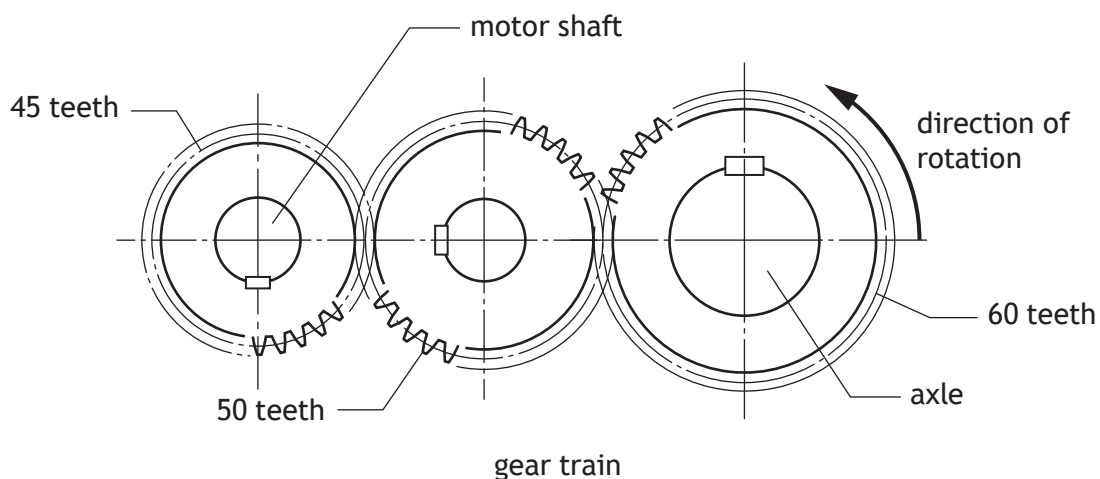
[Turn over

8. (continued)

The two axles on a bogie of a high-speed locomotive are each driven by an AC electric motor acting through a gear train, as shown below.



The gear train is shown below. For each gear, the pitch circle diameter where the gear teeth mesh is proportional to the number of teeth on the gear. The pitch circle diameter of the gear on the bogie axle is 480 mm. All gears have a pressure angle of 20° . For a time at which the train is moving at constant speed, the motor produces 80 kW at $1800 \text{ revs min}^{-1}$.

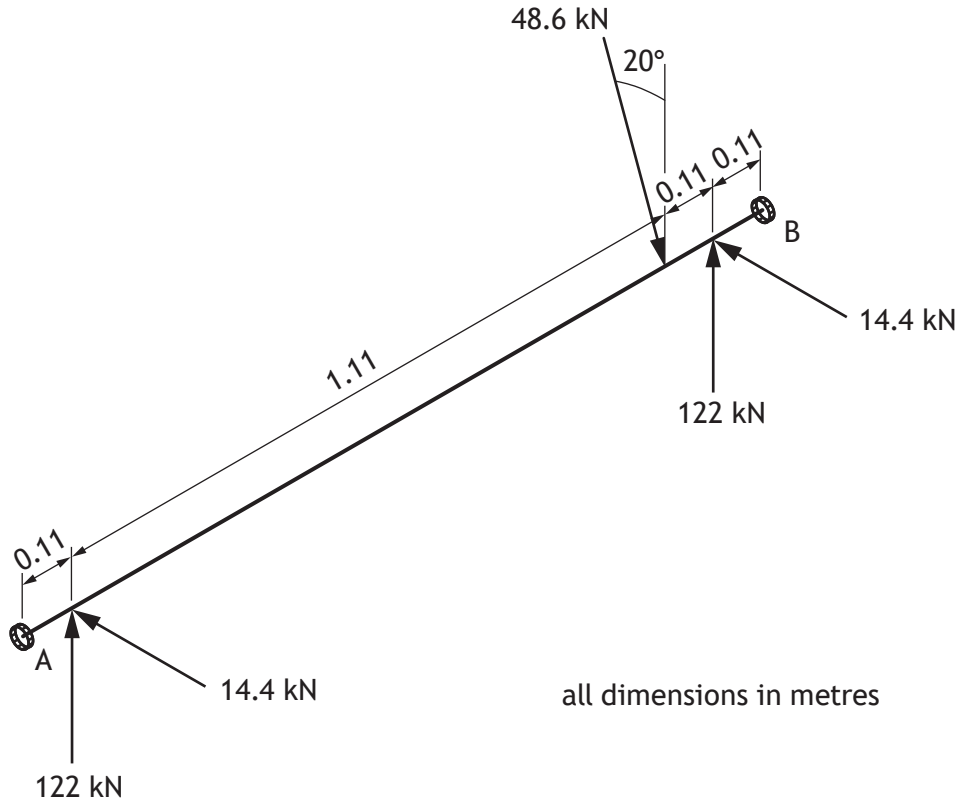


- (e) Calculate the magnitude of the force acting on the motor shaft gear at the point at which it meshes **and** indicate, on a sketch, the direction of this force.

4

8. (continued)

The forces on the gear and on the axle are shown below for a time where the passenger train is running at a constant speed. The gear force is 48.6 kN acting at 20° and the wheel forces are 122 kN vertically and 14.4 kN horizontally (for each wheel).

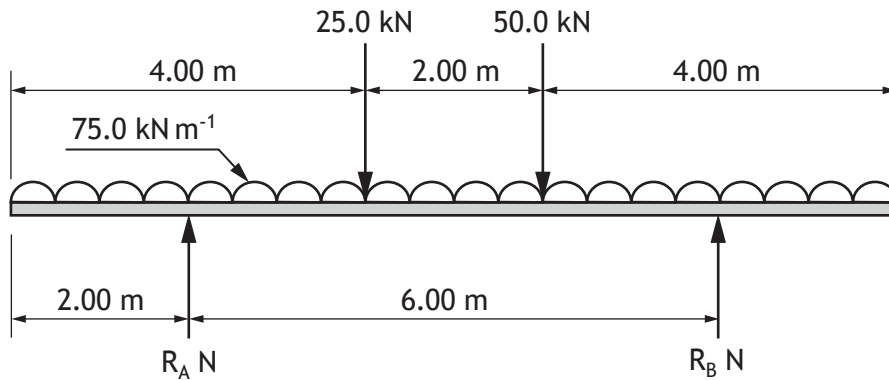


- (f) Determine the magnitude and direction of the reaction at bearing B for the given axle loading conditions.

5

[Turn over

9. A free-body diagram for one leg of the frame that supports a turbine that is under water is shown below. It is simply supported with a uniformly distributed load representing the ballast to hold the structure on the seabed. The turbine load is represented as two vertical point loads.



- (a) Draw the shear force diagram for the loaded beam on the **worksheet for question 9 (a)**.

4

The maximum bending moment acting on the beam occurs at a point between the 25.0 kN and 50.0 kN point loads. A distance, x , is measured to a point along the length of the beam from its left-hand end.

- (b) (i) Construct the equation to define the bending moment as a function of length along the beam, x , for the section of the beam between the two point loads ($4 \leq x \leq 6$).
- (ii) Determine, by differentiating the bending moment equation, the distance from the left-hand end of the beam at which the maximum bending moment occurs.

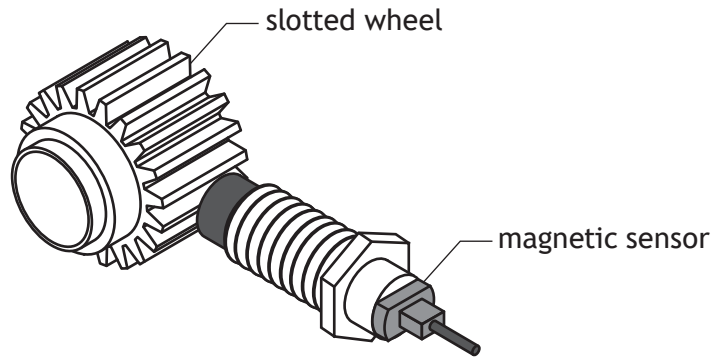
3

2

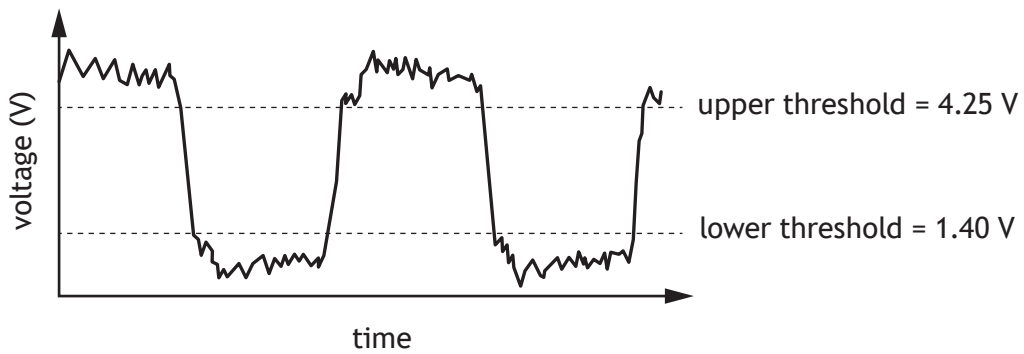
9. (continued)

MARKS

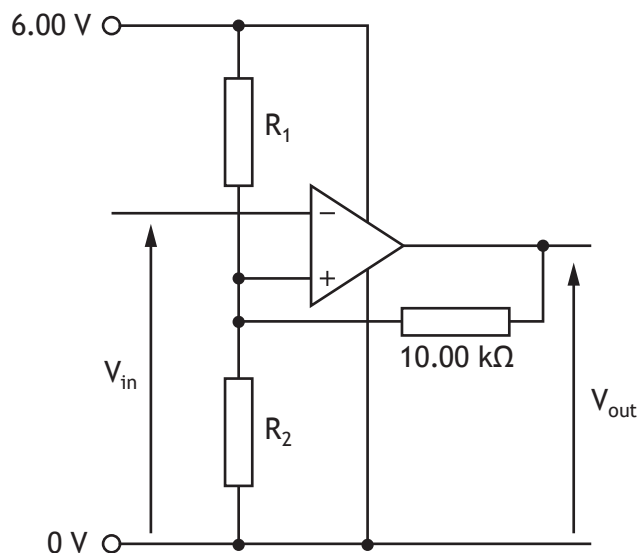
The speed of the turbine is measured using a magnetic sensor and a slotted wheel, as shown below.



As the turbine rotates the following signal is produced.



A Schmitt trigger circuit is used to remove the electrical noise from the signal.



Minimum $V_{out} = 0.00 \text{ V}$

Maximum $V_{out} = 5.20 \text{ V}$

(c) Calculate, using nodal analysis, suitable values for R_1 and R_2 .

5

[Turn over

9. (continued)

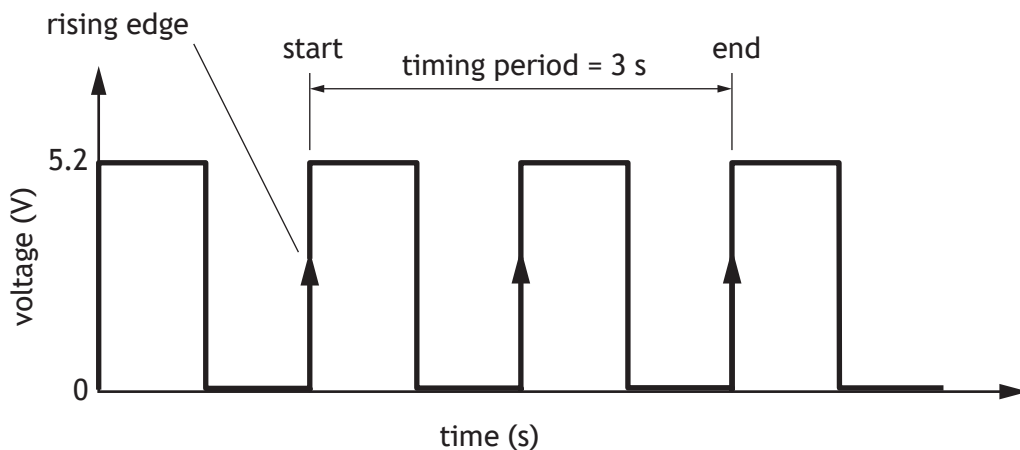
A program is written to further process the signal from the slotted wheel and to display the speed of the turbine in revs min^{-1} . The slotted wheel has 20 slots.

Section A of the program counts the number of pulses on pin 0 which go from a low level to a high level over a period of 3 seconds. The value of 3000 in section A produces this delay.

Arduino	PBasic
<pre>volatile int counter = 0; int displayrpm = 0; int rpm = 0;</pre>	<pre>symbol displayrpm = w1 symbol rpm = w2 symbol counter = w0</pre>
Section A	Section A
<pre>void setup() { Serial.begin(9600); attachInterrupt(0, count, RISING);} void count() {counter = counter + 1;} void loop() { delay(3000);</pre>	<pre>main: count b.0, 3000, counter</pre>
Section B	Section B
<pre>rpm = counter; Serial.print(rpm); counter = 0; }</pre>	<pre>rpm = counter serout 7, N2400, (rpm) counter = 0 goto main</pre>

Note: There is no synchronisation between the input signal and the beginning of the timing cycle.

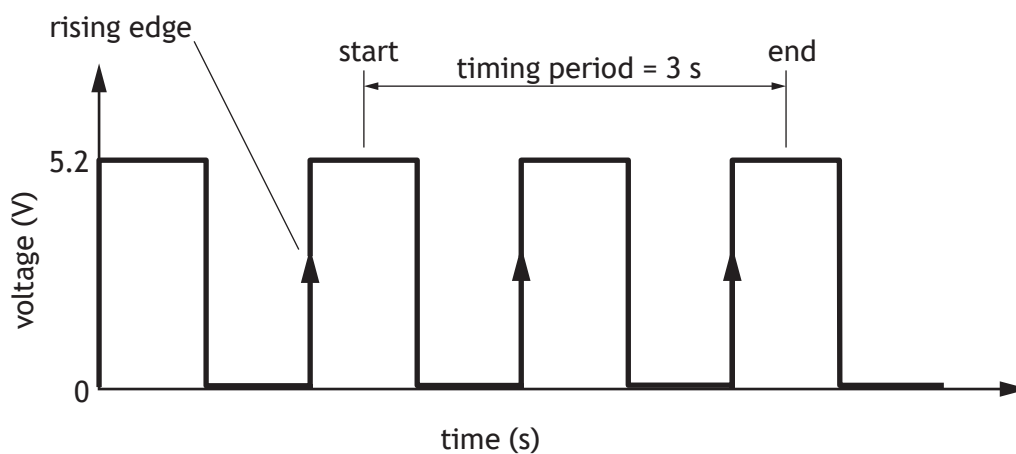
Ideal scenario — timing begins just as a rising edge occurs.



This would produce a reading of 3 revs min^{-1} .

9. (continued)

Non-ideal scenario — timing begins just after a rising edge.

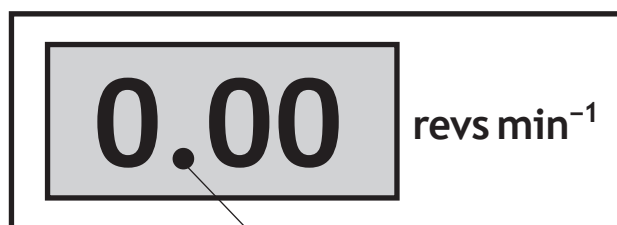


This would produce an output speed reading of 2 revs min^{-1} .

- (d) Calculate the maximum percentage error the program could produce for a turbine speed of 10 revs min^{-1} .

2

In operation the turbine runs at rotational speeds in the range 5 to 9 revs min^{-1} . The manufacturer wants to guarantee a speed reading with a 5% tolerance for a minimum speed of 5 revs min^{-1} . They also want to display the speed with three digits as shown below. The decimal point is printed on the screen.



pre-printed decimal point

- (e) Describe how the program, shown opposite, could be adapted to ensure a speed reading is displayed as described above, **and** within tolerance.

4

[END OF QUESTION PAPER]

[BLANK PAGE]

DO NOT WRITE ON THIS PAGE

[BLANK PAGE]

DO NOT WRITE ON THIS PAGE

[BLANK PAGE]

DO NOT WRITE ON THIS PAGE

Acknowledgement of copyright

Section 1 question 6 Scharfsinn/shutterstock.com

Section 2 question 8 Ortodox/shutterstock.com