

**Cambridge OCR Level 3 Advanced Subsidiary
GCE in Biology B (Advancing Biology)
H022/02 Biology in depth
Sample Question Paper**

Date – Morning/Afternoon

Version 2.3

Time allowed: 1 hour 30 minutes

You must have:

- the Insert

You may use:

- a scientific or graphical calculator



+ o o o o o o

First name											
Last name											
Centre number							Candidate Number				

INSTRUCTIONS

- Use black ink. You may use an HB pencil for graphs and diagrams.
- Complete the boxes above with your name, centre number and candidate number.
- Answer **all** the questions.
- Where appropriate, your answers should be supported with working. Marks may be given for a correct method even if the answer is incorrect.
- Write your answer to each question in the space provided.
- Additional paper may be used if required but you must clearly show your candidate number, centre number and question number(s).
- Do **not** write in the bar codes.

INFORMATION

- The total mark for this paper is **70**.
- The marks for each question are shown in brackets [].
- Quality of extended responses will be assessed in questions marked with an asterisk (*).
- This document consists of **20** pages.

BLANK PAGE

2 **Table 2.1** shows some components which can be found in phloem sap.

Component	Concentration (mg cm ⁻³)
Sucrose	80 – 160
Protein	1.45 – 2.20
Amino acids	5.20
Phosphate ions	0.35 – 0.55
Potassium ions	2.30 – 4.40

Table 2.1

(a) Explain what is meant by the term *organic molecule* using an example from **Table 2.1**.

.....

.....

.....

..... [2]

(b) A student tested a sample of phloem sap by placing the sample in a test tube and carrying out a Benedict's test. The result of the Benedict's test was negative.

(i) Describe the appearance of the test tube when a negative result is obtained in a Benedict's test.

.....

..... [1]

(ii) The student observed that, following the Benedict's test, the tube appeared cloudy. Using your knowledge of the Benedict's test and the information in **Table 2.1**, suggest why the tube content appeared cloudy after the test.

.....

.....

.....

.....

..... [2]

3 (a) Scientists studying human evolution have shown that both *Homo neanderthalensis* and *Homo sapiens* were ‘hunter-gatherers’. Both evolved behaviours in response to the changing environment. *Homo sapiens* made the transition to producing food.

(i) What evidence might suggest that both species hunted food?

.....
.....
.....
..... [2]

(ii) Suggest how **one** environmental factor may have caused a change in the behaviour of both species.

.....
.....
.....
..... [2]

(iii) Suggest two advantages to *Homo sapiens* of producing food rather than hunting or gathering.

.....
.....
.....
..... [2]

- (b) The hyoid bone is a horseshoe-shaped structure found in the neck. It supports the root of the tongue and is needed for speech. Hyoid bones from *Homo neanderthalensis* were discovered in 1989.

Why is the discovery of the hyoid bone **not** conclusive evidence of the ability of *Homo neanderthalensis* to speak?

.....

.....

.....

..... [2]

4 Viruses are pathogens. They can infect both animal and plant cells.

Fig. 4.1 is a diagram of the human immunodeficiency virus (HIV).

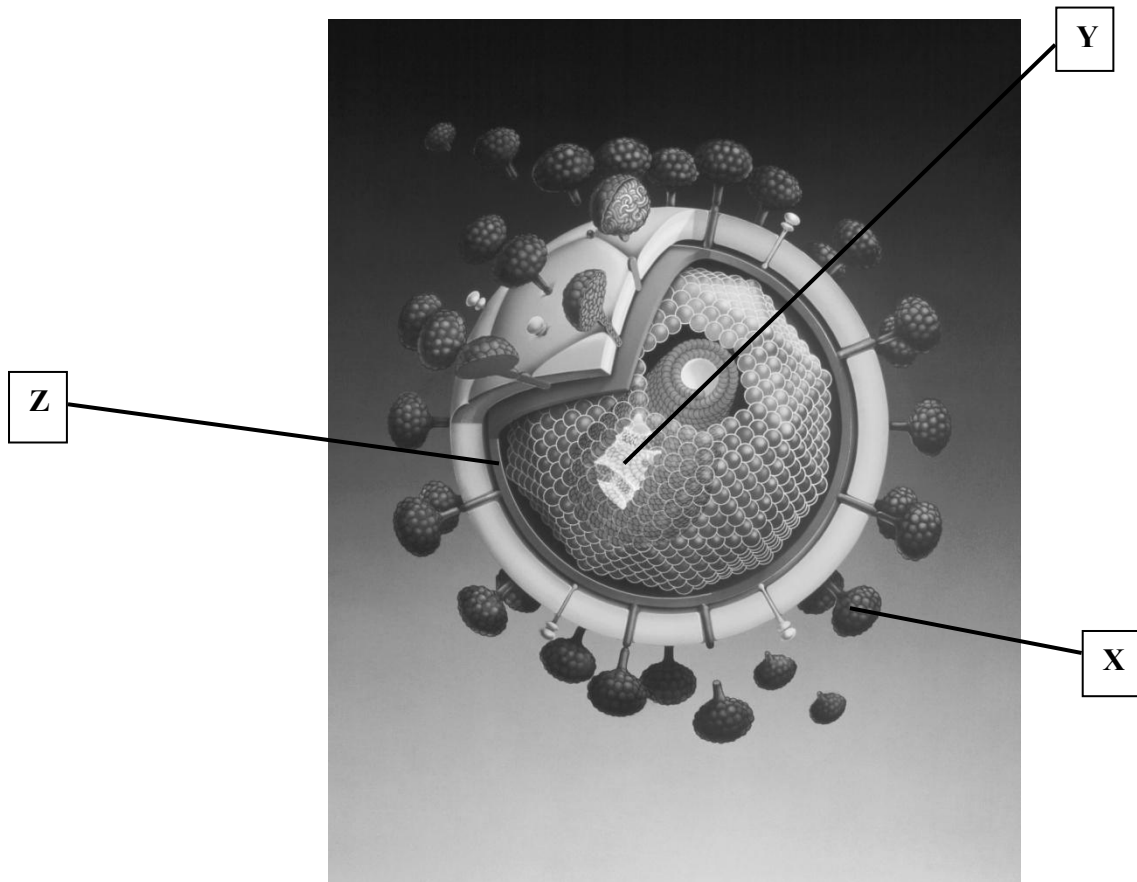


Fig. 4.1

(a) What is the role of structure X?

X

..... [1]

(c) Highly active antiretroviral therapy (HAART) is a treatment used for patients infected with HIV. This therapy involves multiple drugs which reduce the viral count and prevent opportunistic infections.

(i) Explain, using an example, what is meant by the term *opportunistic infection* when related to acquired immunodeficiency syndrome (AIDS).

.....

.....

.....

..... [2]

Fig. 4.2 shows the trends in the incidence of AIDS, the number of AIDS-related deaths, and the prevalence of AIDS in the USA from 1985 to 2003.

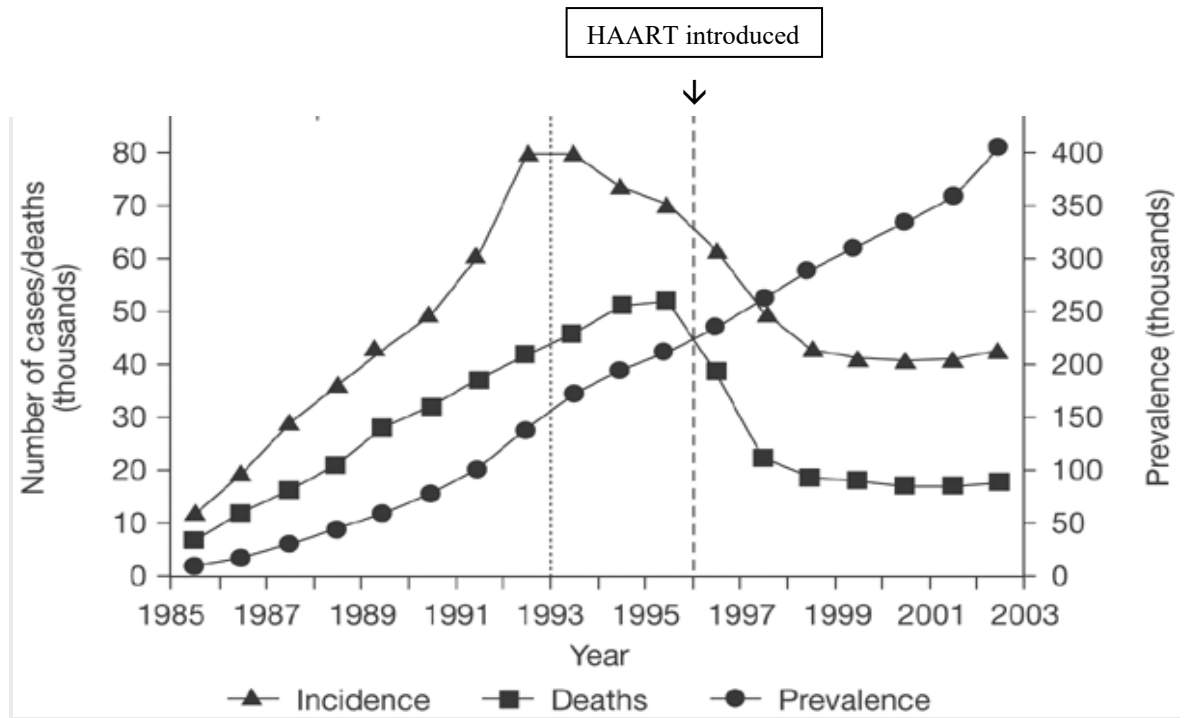


Fig. 4.2

(ii) Compare the trends in incidence of AIDS and AIDS-related deaths between 1988 and 1995.

.....

.....

.....

.....

..... [3]

(iii) HAART was introduced in 1996.

Evaluate the effectiveness of the introduction of HAART on the prevalence of AIDS and the number of AIDS-related deaths.

.....

.....

.....

..... [3]

- 5 (a) When preparing cells for viewing under a microscope, the technique of differential staining may be used.

Fig. 5.1, on the insert, is a micrograph showing a stained section of plant root tissue.

- (i) Use **Fig. 5.1** to explain what is meant by differential staining.

.....

.....

.....

..... [2]

- (ii) Selecting the appropriate measurements from **Fig. 5.1, on the insert**, calculate the proportion of the root area that is occupied by the **stele**.

You can assume that all the structures are circular.

proportion of root area occupied by the stele[3]

- (iii) **Fig. 5.2, on the insert**, shows light micrographs of the blood smears from two patients, **A** and **B**.

To prepare the samples for viewing under the microscope, health professionals must first obtain blood from the patients.

State and explain **one** safety precaution that must be taken by a health professional when obtaining and handling blood samples.

.....

.....

.....

..... [2]

- (iv) A laboratory technician compared the stained smear from both patients, **A** and **B**, from **Fig. 5.2, on the insert**, and made the following statements:

Statement 1: *'The blood smear of patient B appears normal'.*

Statement 2: *'The same differential stain was used in preparing both blood smears'.*

Statement 3: *'The cell labelled X in both micrographs can be identified as a lymphocyte'.*

Statement 4: *'Patient A may have a type of blood cancer'.*

What evidence in **Fig. 5.2, on the insert**, supports the statements made by the laboratory technician?

Statement 1.....

.....

Statement 2.....

.....

Statement 3.....

.....

Statement 4.....

.....

[4]

- (v) The laboratory technician suggested that further blood smears for patient **A** would be needed before the diagnosis was confirmed.

Suggest why.

.....

..... [1]

(c) (i) Flow cytometers can be used to analyse blood. **Fig. 5.4** outlines the process of flow cytometry.

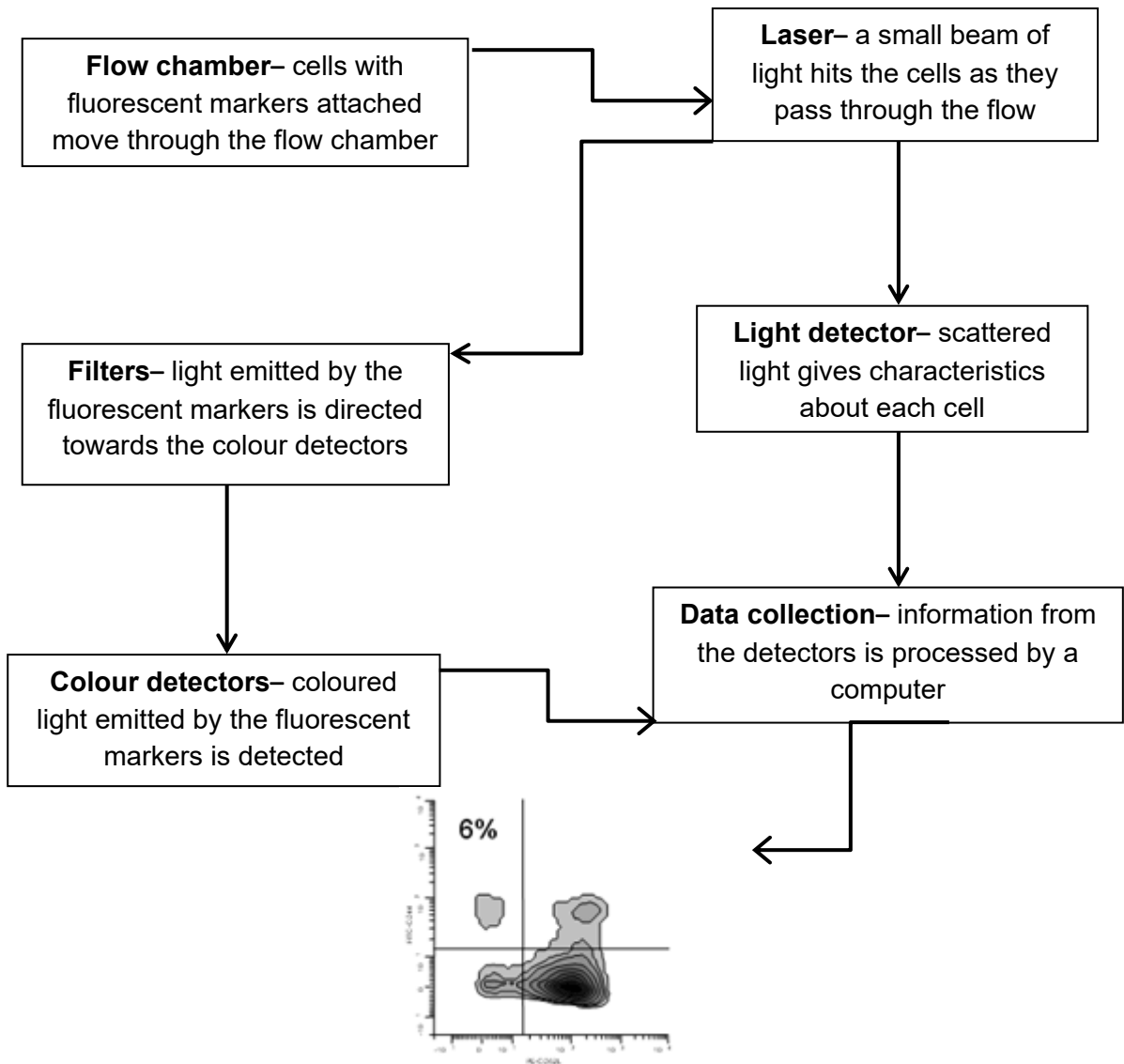


Fig. 5.4

Evaluate the use of using flow cytometry in blood analysis.

.....

.....

.....

.....

.....

.....

.....

.....

.....

.....

.....

[5]

6 Apoptosis is programmed cell death. It is an important process in the formation of fingers and toes of a developing fetus.

(a) Statements **A** to **E** below describe the process of apoptosis.

Put the statements in the correct order.

A ‘blebbing’ of the cell surface membrane occurs

B apoptotic bodies are engulfed by phagocytes

C the cell shrinks

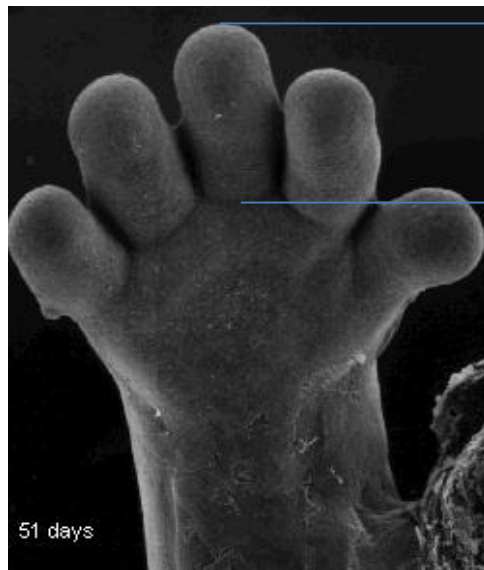
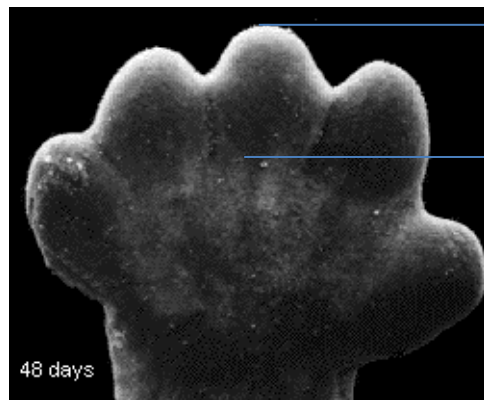
D breakdown of the nucleus occurs

E receptors on phagocytes recognise surface phospholipids on the apoptotic bodies

.....

[3]

(b) (i) Fig. 6.1 shows the hands of a fetus at two different stages in development.



<p>Scale 1 mm = 0.25 mm</p>
--

Fig. 6.1

Using Fig. 6.1, calculate the growth **rate** of the middle digit between 48 and 51 days.

growth rate mm day⁻¹ [2]

- (ii) Name **one** nutrient that is required to support the growth of tissues in the developing fetus and state its role.

.....

..... [1]

END OF QUESTION PAPER

Copyright Information:

Page 8, Fig. 4.1: HIV image © Hans-Ulrich Osterwalder/Science Photo Library

Page 10, Fig. 4.2: AIDS graph © Yarchoan, R., Tosato, G., and Little, R.F. (2005), 'Therapy Insight: AIDS-related malignancies—the influence of antiviral therapy on pathogenesis and management'. *Nature Clinical Practice Oncology* (2005) 2. 406–415. Reproduced from Nature Publishing. Permission conveyed through Copyright Clearance Center.

Page 14, Fig. 5.3: Leukaemia graph © www.cancerresearch.org.uk

Page 15, Fig. 5.4: Process of flow cytometry © Oregon State University, Environmental Health Science Center, 1011 ALS Building, Corvallis, OR 97331

Page 16, Fig. 5.5: Leukaemia (C91-C95), Average Number of New Cases per Year and Age-Specific Incidence Rates, UK 2008-2010. Cancer Research UK, reproduced with permission.

Page 18, Fig. 6.1: hands of fetus images © <http://www.i-am-pregnant.com/Pregnancy/calendar/week/7>

Cambridge OCR is part of Cambridge University Press & Assessment, a department of the University of Cambridge.

Cambridge OCR is a Company Limited by Guarantee and an exempt charity. Registered in England.

Registered office: The Triangle Building, Shaftesbury Road, Cambridge, CB2 8EA. Registered company number: 3484466.

We operate academic and vocational qualifications regulated by Ofqual, Qualifications Wales and CCEA as listed in their qualifications registers.

We are committed to providing a fully accessible experience across all our products, platforms, and websites. Find out more about our [accessibility standards](#).

© Cambridge OCR 2026. All rights reserved. We retain the copyright on all our publications. However, our registered centres are permitted to copy and distribute our material for their own internal use, in line with any specific restrictions detailed in the publication. Find out more about our [copyright policies](#).

We update our publications regularly so please check you have the most up-to-date version.

We cannot be held responsible for the persistence or accuracy of URLs for external or third-party internet websites referred to in this publication and do not guarantee that any content on such websites is, or will remain, accurate or appropriate.

When we update our specifications, you'll see a new version number and a summary of the changes. While we do our best to reflect these changes in all associated resources on [Teach Cambridge](#), if you notice any discrepancies, please refer to the latest specification on our website and [let us know](#).

Our resources do not represent any teaching method we expect you to use. We cannot be held responsible for any errors or omissions in our resources.

OCR

Oxford Cambridge and RSA

...day June 20XX – Morning/Afternoon

Cambridge OCR Level 3 Advanced Subsidiary GCE in Biology B (Advancing Biology)

H022/02 Biology in depth

SAMPLE MARK SCHEME

Duration: 1 hour 30 minutes

MAXIMUM MARK 70

This document consists of 16 pages

MARKING INSTRUCTIONS**PREPARATION FOR MARKING****SCORIS**

1. Make sure that you have accessed and completed the relevant training packages for on-screen marking: *scoris assessor Online Training*; *OCR Essential Guide to Marking*.
2. Make sure that you have read and understood the mark scheme and the question paper for this unit. These are posted on the RM Cambridge Assessment Support Portal <http://www.rm.com/support/ca>
3. Log-in to scoris and mark the **required number** of practice responses (“scripts”) and the **required number** of standardisation responses.

YOU MUST MARK 10 PRACTICE AND 10 STANDARDISATION RESPONSES BEFORE YOU CAN BE APPROVED TO MARK LIVE SCRIPTS.

MARKING

1. Mark strictly to the mark scheme.
2. Marks awarded must relate directly to the marking criteria.
3. The schedule of dates is very important. It is essential that you meet the scoris 50% and 100% (traditional 50% Batch 1 and 100% Batch 2) deadlines. If you experience problems, you must contact your Team Leader (Supervisor) without delay.
4. If you are in any doubt about applying the mark scheme, consult your Team Leader by telephone, email or via the scoris messaging system.

5. Work crossed out:
- a. where a candidate crosses out an answer and provides an alternative response, the crossed out response is not marked and gains no marks
 - b. if a candidate crosses out an answer to a whole question and makes no second attempt, and if the inclusion of the answer does not cause a rubric infringement, the assessor should attempt to mark the crossed out answer and award marks appropriately.
6. Always check the pages (and additional objects if present) at the end of the response in case any answers have been continued there. If the candidate has continued an answer there then add a tick to confirm that the work has been seen.
7. There is a NR (No Response) option. Award NR (No Response)
- if there is nothing written at all in the answer space
 - OR if there is a comment which does not in any way relate to the question (e.g. 'can't do', 'don't know')
 - OR if there is a mark (e.g. a dash, a question mark) which isn't an attempt at the question.

Note: Award 0 marks – for an attempt that earns no credit (including copying out the question).

8. The scoris **comments box** is used by your Team Leader to explain the marking of the practice responses. Please refer to these comments when checking your practice responses. **Do not use the comments box for any other reason.**

If you have any questions or comments for your Team Leader, use the phone, the scoris messaging system, or email.

9. Assistant Examiners will send a brief report on the performance of candidates to their Team Leader (Supervisor) via email by the end of the marking period. The report should contain notes on particular strengths displayed as well as common errors or weaknesses. Constructive criticism of the question paper/mark scheme is also appreciated.

10. For answers marked by levels of response:

- Read through the whole answer from start to finish.
- Decide the level that **best fits** the answer – match the quality of the answer to the closest level descriptor.
- To select a mark within the level, consider the following:
 - Higher mark:** A good match to main point, including communication statement (in italics), award the higher mark in the level
 - Lower mark:** Some aspects of level matches but key omissions in main point or communication statement (in italics), award lower mark in the level.

Level of response questions on this paper are **2(a)** and **4(b)**.

11. Annotations

Annotation	Meaning
DO NOT ALLOW	Answers which are not worthy of credit
IGNORE	Statements which are irrelevant
ALLOW	Answers that can be accepted
()	Words which are not essential to gain credit
—	Underlined words must be present in answer to score a mark
ECF	Error carried forward
AW	Alternative wording
ORA	Or reverse argument

12. Subject-specific Marking Instructions

INTRODUCTION

Your first task as an Examiner is to become thoroughly familiar with the material on which the examination depends. This material includes:

- the specification, especially the assessment objectives
- the question paper
- the mark scheme.

You should ensure that you have copies of these materials.

You should ensure also that you are familiar with the administrative procedures related to the marking process. These are set out in the OCR booklet **Instructions for Examiners**. If you are examining for the first time, please read carefully **Appendix 5 Introduction to Script Marking: Notes for New Examiners**.

Please ask for help or guidance whenever you need it. Your first point of contact is your Team Leader.

Question		Answer	Marks	Guidance
1	(a)	Any 3 from: tertiary structure gives specific shape of active site ✓ asparagine has complementary shape to active site ✓ enzyme-substrate complex can be formed ✓ lowers activation energy ✓	3	
	(b)	(normal cells) do not use asparagine ✓	1	
	(c)	Any 1 from: acts as antigen ✓ destroyed by cell's immune system ✓	1	
		Total	5	

Question		Answer	Marks	Guidance
2	(a)	<i>idea of a molecule containing mainly carbon and a number of other elements ✓ sucrose / protein / amino acids, used as illustration ✓</i>	2	Examples of other elements could include hydrogen, nitrogen, sulphur
	(b) (i)	(solution remains) blue ✓	1	
	(ii)	Any 2 from: precipitate is produced ✓ copper oxide is insoluble ✓ high temperatures / boiling, required in the Benedict's test ✓ boiling / high temperatures, denature the protein in the phloem sap ✓	2	
	(c)*	<p>Level 3 (5–6 marks) A detailed explanation of both loading and movement by mass flow, including reference to sources and sinks and the features and roles of the sieve tube elements and companion cells.</p> <p><i>There is a well-developed line of reasoning which is clear and logically structured. The information presented is relevant and substantiated.</i></p> <p>Level 2 (3–4 marks) A partial explanation of both loading and movement by mass flow. Includes reference to sources and sinks or the features or roles of the sieve tube elements or companion cells.</p> <p><i>There is a line of reasoning presented with some structure. The information presented is in the most-part relevant and supported by some evidence.</i></p>	6	<p>Examples of relevant material could include the following:</p> <p><i>Loading</i></p> <ul style="list-style-type: none"> loading into companion cells location of companion cells at a source or named source active loading of sucrose (using ATP) mitochondria presence in companion cells description of mechanism of H⁺ gradient and co-transport movement via plasmodesmata into sieve tube elements <p><i>Movement</i></p> <ul style="list-style-type: none"> mass flow from source to sink ref to high hydrostatic pressure at source ref to inflow of water by osmosis at the source (creating the pressure) ref to passage through sieve plates or cytoplasmic connections

Question			Answer	Marks	Guidance
			<p>Level 1 (1–2 marks) An explanation of either loading or movement.</p> <p><i>There is an attempt at a logical structure with a line of reasoning. The information is in the most part relevant.</i></p> <p>0 marks No response or no response worthy of credit.</p>		<ul style="list-style-type: none"> • ref to low hydrostatic pressure at the sink • ref to unloading at the sink <p>ALLOW use of annotated diagrams</p>
			Total	11	

Question			Answer	Marks	Guidance
3	(a)	(i)	evidence of tools ✓ evidence of tool marks on fossilised animal bones ✓	2	
		(ii)	factor e.g. climate change ✓ link e.g. could cause migration ✓	2	Answer should link factor to description
		(iii)	Any 2 from: settlements ✓ could farm animals and plants ✓ <i>idea that</i> humans could control breeding of animals ✓ increase food availability ✓	2	
	(b)		<i>idea that</i> position of hyoid bone may not be determined from fossils ✓ <i>idea that</i> further evidence would be needed e.g. tongue position ✓	2	
			Total	8	

Question		Answer	Marks	Guidance
4	(a)	X (surface glycoprotein) for binding to host cell ✓	1	
	(b)*	<p>Level 3 (5–6 marks) The means of transmission is clearly understood and described in detail, using an example. How the spread can be controlled is discussed in detail and the learner considers more than one measure of control.</p> <p><i>There is a well-developed line of reasoning which is clear and logically structured. The information presented is relevant and substantiated.</i></p> <p>Level 2 (3–4 marks) The means of transmission is described. At least one good suggestion of how to control the spread of the virus is given.</p> <p><i>There is a line of reasoning presented with some structure. The information presented is in the most-part relevant and supported by some evidence.</i></p> <p>Level 1 (1–2 marks) Relevant comment about the means of transmission or control of spread.</p> <p><i>There is an attempt at a logical structure with a line of reasoning. The information is in the most part relevant.</i></p> <p>0 marks No response or no response worthy of credit.</p>	6	<p>Examples of relevant material could include the following:</p> <p><i>means of transmission</i></p> <ul style="list-style-type: none"> • spreads from person to person in body fluids • named example e.g. from mother to baby in uterus • once in blood virus enters T lymphocytes • may remain dormant for long period <p><i>controlling the spread</i></p> <ul style="list-style-type: none"> • screening donated blood • education • named example e.g. giving sterile needles to drug users • epidemiological testing • access to means of prevention e.g. condom clinics

Question		Answer	Marks	Guidance
	(c)	(i)		
		<p><i>idea of breakdown / lack of T lymphocytes leading to further infection ✓</i> <i>example of infectious agent with the relevant disease ✓</i></p>	2	
		(ii)		
		<p>Any 3 from: <i>incidence and deaths both increase between 1988 and 1992 ✓</i> <i>between 1992 to 1993 incidence stays the same ✓</i> <i>between 1993 to 1995 incidence decreases ✓</i> <i>between 1993 to 1995 deaths continue to increase ✓</i> <i>greater difference between incidence and deaths in 1995 (or 1993) than in 1988 ✓</i></p>	3	
		(iii)		
		<p><i>prevalence and deaths both increased before introduction of HAART ✓</i></p> <p><i>prevalence continued to increase after HAART (because) more people with AIDS surviving longer ✓</i></p> <p><i>deaths decreased after HAART (because) HIV infected people responding to treatment ✓</i></p>	3	
			Total	
			15	

Question			Answer	Marks	Guidance
5	(a)	(i)	<i>idea that</i> multiple stains / different stains used ✓ <i>idea that</i> different stain taken up by different tissues / different tissues are stained different colours ✓	2	
		(ii)	whole root area 149.57 cm ² ✓ stele root area 66.48 cm ² ✓ proportion of root area that is stele – 2.25 ✓	3	ALLOW range 147 -153 cm ² ALLOW range 66 – 69 cm ² ALLOW 2.22 – 2.27
		(iii)	Any 2 from: sterile equipment / disposable gloves ✓ (because) blood samples, potentially hazardous / biohazard ✓ example of risk e.g. HIV ✓	2	
		(iv)	<i>'The blood smear of patient B appears normal'</i> <i>idea that</i> appearance and number of both erythrocytes and leucocytes is as expected ✓ <i>'The same differential stain was used in preparing both blood smears'</i> <i>idea that</i> nuclei of leucocytes in both smears are same colour ✓ <i>'The cell labelled X in both micrographs can be identified as a lymphocyte'</i> <i>idea of</i> large round nucleus /small cytoplasm: nuclear ratio ✓ <i>'Patient A has a type of blood cancer'</i> <i>idea of</i> abnormally large number of, leucocytes / lymphocytes ✓	4	

Question			Answer	Marks	Guidance
		(v)	<p>Any 1 from: <i>idea that</i> the cause of the abnormal blood smear could be temporary ✓ ethical reasoning e.g. false positive ✓ blood of patient A may be atypical ✓</p>	1	
	(b)	(i)	44% ✓✓	2	1 mark for calculation. $500 - 280 \times 100 / 500$
		(ii)	<p>Any 3 from: decrease in risk with ageing from 0–9 years ✓ remains steady / age has little effect, from 10–29 years ✓ increase in risk with ageing from 30–74 years ✓ decrease in risk with ageing from 75–85 years in males ✓ after 35 years risk for males increases more than females ✓ age 85+ risk is greater for females ✓</p>	3	
	(c)	(i)	<p>Any 5 from: <i>advantages of flow cytometry</i> <i>idea that</i> large number of cells can be counted in short period of time ✓ number and type of cell can be counted ✓ can measure physical characteristics of the cell ✓ can determine, DNA content / protein and enzymes, in cell ✓ <i>disadvantages of flow cytometry</i> expensive ✓ flow cytometry machines are large ✓ highly trained technicians are required ✓</p>	5	ORA for other counting methods

Question			Answer	Marks	Guidance
		(ii)	immune system of mouse B produces large number of T lymphocytes ✓ immune system of mouse C has not produced many T lymphocytes ✓ immune system of mouse C is prevented from producing enough T lymphocytes when injected with tumour cells ✓	3	
			Total	25	

Question		Answer	Marks	Guidance	
6	(a)	C A D E B ✓✓✓	3	First correct C – one mark, last correct B – one mark, ADE anywhere in that order – 1 mark	
	(b)	(i)	0.58 ✓✓	2	ALLOW 2 marks for the correct answer with no working ALLOW 1 mark for calculation without final step $24 - 17 = 7 / 3 = 2.3$
		(ii)	Any 1 from: protein for production of new cells / enzymes / skin / bone ✓ vitamin D for production of, bones / teeth ✓ phosphorus / calcium, for production of, bones / teeth ✓	1	
			Total	6	

Summary of updates

Date	Version	Change
January 2019	2.0	Minor accessibility changes to the paper: i) Additional answer lines linked to Level of Response questions ii) One addition to the rubric clarifying the general rule that working should be shown for any calculation questions.
October 2020	2.1	Updated copyright acknowledgements.
March 2026	2.2	Withdrawal information of qualification including final first teach date and final assessment opportunity date.
April 2026	2.3	Updated copyright acknowledgements.